

“BRASEA”

AUCTION CATALOGUE

BRISBANE

**SUNSHINE STATE
WINTER BULLETIN**

JULY 20th 2014

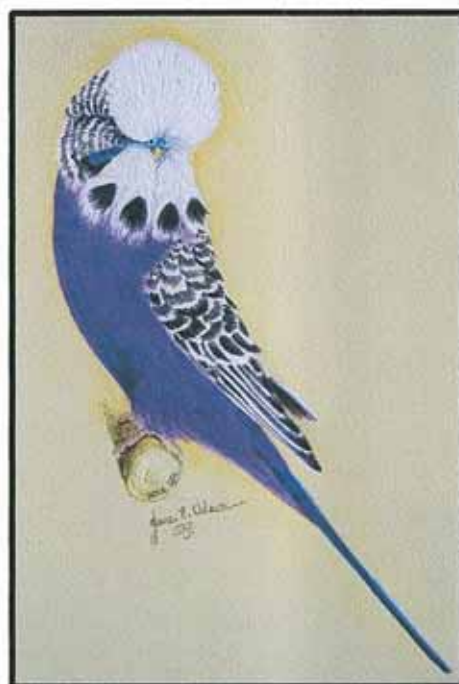
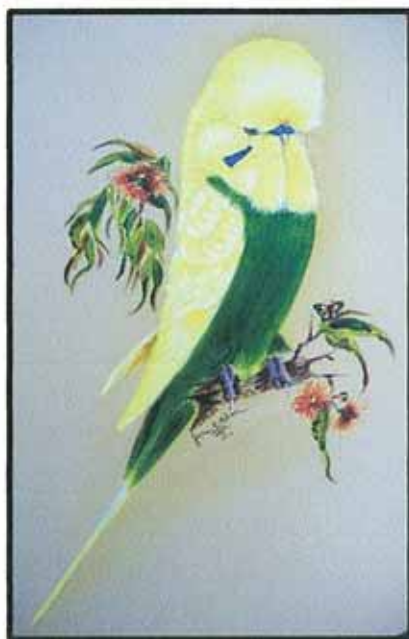


Lots available on www.brasea.com

**STRATHPINE COMMUNITY CENTRE
MECKLEM STREET, CNR GYMPIE RD
STRATHPINE BRISBANE**

THE ART OF JANE .E. ADAM

Jane is now based in **NEW ZEALAND** and is offering
High Quality Original **ART of Sculptures & Paintings.**

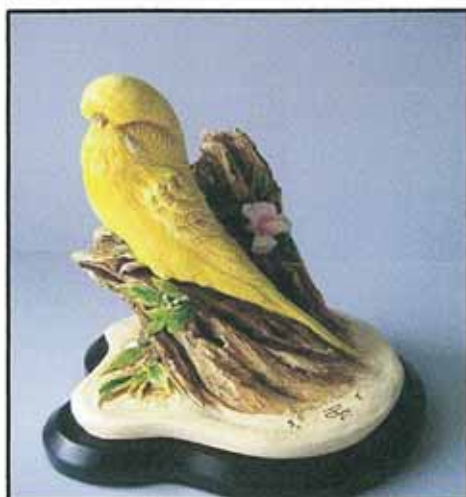


For Information & Current Prices please contact:

jane-adam@hotmail.com.au

PH: +64-062125005

www.janeanimalartist.com



"BRASEA"

Budgerigar Rare & Specialist Exhibitors of Australasia

BRISBANE

BUDGERIGAR AUCTION

Sunday July 20th 2014....

at the

**STRATHPINE COMMUNITY CENTRE,
enter off MECKLEM STREET, CNR GYMPIE ROAD
STRATHPINE**

Inspections start at 8am

..... auction commences at 9am

AUCTIONEER Peter Schellbach

**Full copies of the Auction Rules available
on the day at the entrance or on www.brasea.com**

Purchases are required to register and receive a bidders number

No reserves are placed on any lot

However – the Vendors are entitled to bid on their own birds

*Visa and Mastercard are accepted for all purchases
A 5% Bank Fee is added to your total purchases*

Any queries please contact

Warren 02 9747 6642 or 0418 916685 warren@brasea.com

or Jamie Wright 07 3355 6223 email jwright@jwfs.net.au

***Bookings for the 2015 Brisbane BRASEA Auction will be taken
on the day, you must make sure your name is in the book
max 375 bookings with the extras on our "Reserve List"***

2014 - 2015 MEMBERSHIP RATES

"BRASEA"

Membership still \$25

NOW DUE FOR RE-NEWAL on July 1st

For those who are happy to receive their Bulletins by email only

The 2014/2015 EMAIL Membership is only \$ 15 a year

MEMBERSHIP (Bulletins snail mailed by Aussie Post) \$25 a year*

MEMBERSHIP (Bulletins emailed only) \$15 per year*

**Senior Card Holders, Pensioners and Students under 25 are only \$12.50 pa*

Donations to help with the "Rares" work are, always welcome and we thank those who donate monies and birds but most of all their time every year

JUNIORS under 18 are FREEEEEEEEEE

..... Juniors also show in any "BRASEA" event for FREE

Any number of Family members can join from the one address

for the one single membership fee – i.e. Smith Family ?? and everyone is covered

We cannot afford to snail mail Bulletins and other News if your membership gets behind, reluctantly, after a cupla reminders, we will have to delete you from our mailing lists

.....

***CHECK OUT THE
WEB SITE***

Log on to

www.brasea.com

"BRASEA" NEWS

Well there seems to be a lot of items and news to impart so I think we will have to use the old dot point method so we briefly cover everything in this issue – if at any time you have a thought or query please do not hesitate to contact us – see back cover – it is important so please do ..

Our Junior President Sophie has her column in this issue starting on page 26 and this issue she has a quiz for you to participate in and we would of course especially like to hear from Juniors.

Also on the list is details of the **Sth Queensland Lawn Show** being held at Caboolture on July 19th. This event is for some specific "Rarer" varieties so if you have some come along and see if you can win an award – special class for Juniors and Sophie will be assisting with the Judging.

All the details on Page 9 – contact Di Neale or Jacky if you need any help – great luncheon.

Membership re-newals for BRASEA are now due for the July 2014 – June 2015 year – all the details are on Page 2 – if you are coming to the Lawn Show or Auction bring the renewal with you – if your email or address has not changed there is no need to fill in another form – please make sure we have your current email address – please put your money in an envelope with your name on it as when I get to bank I have all this money and have to wonder who gave it to me, another sign of old age they tell me !!!!!

We are looking for **some different photos** to go on our Web Site and also to use on the Front Cover of our Bulletins – if you have a super shot of one of your birds or someone else's bird can we use it please – just email it in and we will see which one is chosen – many thanks ..

The issue of rings has become a hot topic of late and it has caused some difficulties for many of the "Rare" breeders who are not involved with State or National selections and the like. If you require Rings these can be ordered from BRASEA and we can email an order form for you to complete – money is required with order – these rings CANNOT be used on birds that you wish to enter in your State Teams or National Championships and if you do they will be disqualified, but if you are in need of rings your will need to allow 45 days for delivery but we can help..

The Dates for the **Sydney Royal Easter Show** have been announced – March 26th to April 8th and whilst the Cage Bird section is not confirmed, we believe it will be the first two days again.

The **full list of Shows, Auctions and Sales** is on the Web Site all the Bulletin info is in colour on the site as well with thanks to Canary & Cage Bird Federation of Australia.

The Photos of Henry George's medal presentation following his OAM are on Page 8 – our thanks to Henry for getting us the photos and we hope you can congratulate him if you see him

You can **Bank** into the "BRASEA" account at any time using the Internet or just visit your local Commonwealth Bank and tell them you wish to Bank into the BRASEA account BSB 062-217 Account # 1039 6061 – make sure you put your name in the reference box

*For those of you selling at this coming Brisbane Auction – please try and put **millet sprays** in the cages and make sure your **name is on the back of the cage** so none are lost – if you have lent us cages for the event – many thanks – and please put your name on them all so we can return them all safely – we look forward to a great weekend coming up in Brisbane on July 19th / 20th..*

Whatever you do in our hobby of keeping Budgerigars - remember

Breed, Keep, Exhibit & Enjoy Budgerigars



PINE RIVERS BUDGERIGAR SOCIETY
South Queensland

President: John McAllister
Vice President: Greg Horrobin
Secretary: Keith Schultz

2014 AUCTION

SUNDAY AUGUST 31st
STRATHPINE COMMUNITY CENTRE
Mecklem Street, Strathpine

Leading breeders from South Queensland and Interstate
have been invited to participate.

MasterCard and Visa credit cards accepted + 5% Bank Fee

Interstate bidders

If possible we will try to arrange airport pick up.
We can arrange for someone to bid for you if you cannot come yourself.
You may be able to bid by telephone by prior arrangement.

Initial enquiries to
auction@prbs.org.au

Visit us at

www.prbs.org.au

Catalogue out late mid July, also on the web.
and available at BRASEA Brisbane Auction

PINE RIVERS BUDGERIGAR SOCIETY
GOOD BIRDS - GOOD FRIENDS - GREAT DAY OUT

ARE YOU LOOKING FOR THESE *RARE VARIETIES, SPLITS or COLOURS*

Pr = Lot is a Pair

RECESSIVE PIED 1, 38, 40, 76, 87, 107, 126, 140, 142, 177, 180, 201, 203, 205, 233, 260, 262, 286, 287, 288, 303, 321, 340, 351, 363, 377, 378 ..

LUTINO 22, 62, 105, 106, 127, 143, 197, 237, 246, 261, 330, 336

BLACKEYED SELF / GREY YELLOW OR WHITE/ DILUTES - 46, 48, 56, 117, 120, 124, 144, 153, 208, 241, 267, 284, 352, 371

ALBINO 9, 70, 113, 123, 133, 157, 238, 250, 334

CLEARWING 4, 9, 151 (Pr), 268, 317, 362, 364

LACEWING 12, 18, 61, 82, 111, 141, 150, 173, 198, 204, 222, 240, 264, 275, 294, 301, 304, 335, 353

DARK BLUE / VIOLET & Violet Factor Birds 2, 26, 27, 28, 36, 38, 59, 66, 84, 95, 109, 130, 132, 133, 179, 196, 199, 201, 209, 211, 217, 232, 236, 245, 250, 253, 256, 258, 259, 270, 282, 287, 288, 306, 308, 310, 341, 342, 344, 356, 361

DARK GREEN / OLIVE 6, 22, 33, 35, 53, 88, 116, 142, 151, 179, 201, 214, 303, 321, 351, 362

GREYWING 72, 115, 165, 166, 266, 305, 356 .. we would like more Greywings ..

CLEARBODY 42, 43, 69, 161, 163, 231, 374 we would like to auction some please

FALLOW 23, 24, 25, 91, 128, 129, 172, 183, 291 ... more Fallows please

CREST 329 we would like to auction some please

OTHERS Incl : GOLDENFACE, DARKWING, SADDLEBACK,
DARK EYED CLEAR - 271, 272 more of these please to auction

BANDED, DUTCH, D/Factor OR CLEARFLIGHTED PIEDS - 110 ...

AUSSIE BUSH BUDGIES 187

MELANISTIC SPANGLE 156

Have you any of these varieties for sale ???

VENDORS

For inclusion on this page, please accurately describe the Variety and Colour of your sale birds, when sending in your Lot information – especially the Blues and Greens, whether they are Dk Green, Cobalt, Olive, Violet Skys, Violet, etc

“Budgerigars” weapons of mass enjoyment

AL'S CAGES



**CAGES WITH A DIFFERENCE
WIRE & WIRE/ALUMINIUM**

Contact - Alan Beutel

Phone 07 5466 1384

Email : aeandmt@bigpond.com

July Auction Brisbane Vendors

J & J McAllister	10
Alan Kent	10
Brisbane & Northern Suburbs Budgerigar Society	8
Paul Anderson	3
Bill Kirstenfeldt	10
HARRO (ACT)	10
O'Callaghan Family (Nth Qld)	11
Ernie Wise (NSW)	15
D & V Punton (NSW)	10
Henry George	21
Don Harper (NSW)	8
Brian Hollingsworth	12
Wayne Stephan	10
Sunshine Coast Budgerigar Club	2
Shane Von Pein	8
Brian Walters (NSW)	8
Jamie Wright	13
Fraser Coast Budgerigar Society	6
W & G Robinson	10
Kev & Vicky O'Reilly	9
Northern NSW Budgerigar Breeders Ass	8
Mario Capasso (ACT)	12
Greg Horrobin	10
Mick Greber (NSW)	10
Ken Seagrott (NSW)	20
Abi Haider (NSW)	10
A & A Francis	10
Kev Campbell	10
Peters Family (NSW)	10
Brian Harms	8
Lyle Reibelt	5
Barry Mitchell	10
L & F Percy	8
Peter Schellbach	4
Andrew McFarland (NSW)	20
Scott Eriksen (Nth Qld)	10
Treva Turner	15
BRASEA	5



Total 379

AUCTION July 20th 2014

Strathpine Community Centre

Mecklam Street, Cnr Gympie Road

Strathpine, Brisbane, QLD

Donated = Donated to "BRASEA" - *Thank You!*

LOT No.	RING No.	VARIETY	SEX	BLOODLINES/DESCRIPTON	VENDOR
1	KS13/781	Split Recessive	C	SkyBlue – Big Bird from best recessive line	Ken Seagrott
2	NSW12/372	Violet	C	Bred by Tony Croft	Ken Seagrott
3	KS12/694	Grey Green Opaline Pied	C	O'Reilly Caro Line	Ken Seagrott
4	SQ 9564 - 2014	Normal Grey	C	Alan Ken line. Nice face, but down in size. Has some lovely siblings.	Jamie Wright
5	SQ 9618 - 2014	Opaline Cinnamon Light Green Dominant Pied	H	Nice big young hen from a prolific pair. Kakoschke line.	Jamie Wright
6	SQ 9562 - 2014	Normal Olive	H	Nice size and very well balanced. A great addition for anyone looking to breed dark factors & improve the colour of Lacewings/Lutinos	Jamie Wright
7	1JJ-084-13	Yellowface SkyBlue	H	Sire.1JJ-010-11 Light Green Dam.1JJ-008-09 Spangle Y/F Grey	J&J McAllister
8	1JJ-089-12	Spangle Grey Green	C	Sire.COX-003-09 Spangle Grey Green Dam.COX-020-11Cinn GreyGreen Druery George	J&J McAllister
9	1JJ-012-12	Opaline Grey/Ino	C	Sire.1JJ-111-09 Albino Dam.KD-121-08 Opaline Grey	J&J McAllister
10	14-1526	Opaline Cinnamon Green	H	A big strong maiden hen born October. Still developing.	O'Callaghan Family
11	14-1565	Spangle Grey	C	Carrying a dark factor, probably violet. Born December. Just starting to show some promise.	O'Callaghan Family
12	11-182	Lacewing White	H	Very strongly marked hen. Not used	O'Callaghan Family
13	SQ-5398-2013	Cinnamon Sky Blue	H	Nice directional feather, quality stock hen. Alan Kent lines.	A & A Francis
14	DJI-012-2012	Spangle Sky Blue	H	Nice style of hen with some shoulder. Very good spangle wing markings. Henry George line.	A & A Francis

Clearwing

Blackeye

Clearbody

Crest

Greywing

Violet

Lacewing

Fallow

Darkeyed Clear

Dark Wings

Hi Everyone,

Peter and Jacky Jansen have again offered their home for our lawn show this year. Thank you Jacky and Peter.

Warren has volunteered to judge again. I think he likes the Qld weather and hospitality. Warren will be assisted by the newly appointed Brasea Junior President Sophie Hollingsworth. **So come on all those Juniors get your birds in and support Sophie.** Warren is providing a super trophy for the Junior Section

Juniors

Juniors

Juniors

We are inviting as many Juniors as possible to enter the Junior Section.

Warren is providing a super prize for the winner.

The Lawn Show Group will give away prizes for the Best Cock, Runner Up Cock Best Hen, Runner Up Hen

Support Sophie and the Junior Section

Rosettes, medallions and prizes are there to be won.

No entry form needed. No entry fee. Just turn up and enter lots of birds.

Birds can be old young or juvenile.

Clearwing Breeders have a change so points can be awarded for the Clearwing Challenge.

Clearwings only will be old, young, juvenile and nestfeather.

WHEN: Saturday 19th July 2014

WHERE: Jacky & Peter Jansen, 30 Urban Road, Caboolture Qld 4510 Phone 07 5497 4426

15	SQ-5370-2013	Opaline AOSV G/green	H	Typical Watson face and mask. Very handy hen. Watson lines.	A & A Francis
16	VP-036-13	Normal Grey Green	C	Scoble / Smith	Shane Von Pein
17	VP-006-12	Normal Grey	H	Scoble / Smith	Shane Von Pein
18	SQ 13 13227	Lacewing White	H	A really nice young Lacewing hen with lovely facial features, bred from a split cockbird that I purchased off a well known open breeder. Only for sale as I don't keep lacewings. Not used. Donated by Brad Hargreaves.	Fraser Coast Budgerigar Society
19	SQ – 11 3560	Cinnamon Spangle Grey Green	C	Very fertile breds nice chicks Donated by Graham Barlow	Fraser Coast Budgerigar Society
20	SQR1012060	Opaline Lt Green	C	S: Opaline Lt Grn SQR1010004 D: Opaline Cin Lt Grn SQR1010051 Blow and Directional feather, clean. Chidel opaline line, Tuthill Opal Cin Line. Very fertile. Nice bird.	W & G Robinson
21	SQR1013002	Opaline Cinnamon Grey	H	S:Cin Grey Grn WRBR109046 D: Grey SQR1011008 Good spot and blow, well marked. Showy bird 100% Gazzard bloodline from \$4000 cock. Sister to lot #9	W & G Robinson
22	SQR1012020	Dark Green/Lutino	C	S: Lutino SQR1010025 7 th 2011 National D: Y/F Violet BNS 10G 09080 Super bird Good length, nice split, could be a Y/F. Sister is dam of best cock bred in 2014.	W & G Robinson
23	13SQ 17377	Sky Fallow	C	Green Fallow Cock 11 G&J 150 Cobalt/Fallow Hen 12 G&J 057	Greg Horrobin
24	13 SQ 9233	Sky Opaline Fallow	H	Green Fallow Cock 09 Pr 315 Sky/Fallow Hen 11 G&J 110	Greg Horrobin
25	13 SQ 17376	Green Opaline Fallow	H	Green Fallow Cock 11 G&J 150 Cobalt/Fallow Hen 12 G&J 057	Greg Horrobin
26	SQ 3657 – 2012	Normal Violet	C	Sire: Norm Cobalt (R&G Toombs) Dam: Norm Violet (R&G Toombs) I believe this bird to be true normal. Brother to SQ 3654/12.	Kev Campbell
27	KWC 075 – 2013	Normal Violet Sky	C	Sire: Norm Violet (Horrobin/Toombs) Dam: Norm Violet (K&V O'Reilly) This bird has not been used.	Kev Campbell
28	SQ 3654 – 2012	Normal Violet	H	Sire: Norm Cobalt (100% Toombs) Dam: Norm Violet (100% Toombs) This hen has not been used. Sister to SQ 3657/12	Kev Campbell

All our articles and photos are in full colour on the Web – site

The Canary & Cage Bird Federation of Australia Inc.

annual dinner 2014

Saturday 30th August 2014

Ottimo House

[previously Castel D'Oro Lounge]

120 Great North Road

Five Dock

7pm to midnight

Guest of Honour

Dr Mike Cannon

[Well known Veterinarian and bird health practitioner]

\$60 per head [including drinks not spirits]

The evening is held in a private reception lounge with:

- A five course à la carte meal with all wine, soft drink, and water [not spirits];
 - A dance floor and easy listening music, a DJ;
 - An MC to fill the night with excitement;
 - Lucky door prizes - plus a raffle
 - Easy parking at rear and side streets.

Warren Wilson (02) 9747 6642

warren@brasea.com

Payment at time of booking would be appreciated.

Final numbers Sunday 24th August 2014

No refunds after this date.



29	MRF - 003 / 2013	Grey Normal	C	100% Mark & Rebecca Fellows Cock has breed well for us. Son is DKP-019 & DKP-014 in this auction All budgerigars photo's can be view on our website:- http://www.dkp-budgerigar.com/	Peters Family
30	MRF - 017 / 2012	Greygreen Cinnamon Opaline	H	100% Mark & Rebecca Fellows We have given this hen three round & she finish in January 2014.	Peters Family
31	DKP - 054 / 2013	Green Normal / Blue	C	Sire:- (Green Normal 100% Gary Watson Dam:- (Yellowface Blue Opaline) 100% Allan & Chris Druery Unused.	Peters Family
32	BH-13-018	Cinnomon Opaline Lt Green	H	Gazzard bloodline/Henry George Exceptional Top end mask and spots, shame to let it go	Brian Harms
33	BH-13-026	DK Green	C	Shane von pien lines very nice bird, good face	Brian Harms
34	BH-12-142	Cinnamon Opaline LT Green	H	Gazzard/Treva Turner has prodeuced better then herself, nice chicks	Brian Harms
35	FBA 104 - 13	Spangle Dark Green	C	Ken Dunk/Watson. Solid big bird, nice blow.	Barry Mitchell
36	FBA 273 - 14	Violet Cobalt	C	Hatched 25/9/13. Still growing. Good colour.	Barry Mitchell
37	SQ 253 - 14	Grey Normal	H	Hatched 20/9/13. Schiller/Watson both sides.	Barry Mitchell
38	SQ 10G 292-13	Recessive Pied Violet	C	Good size with directional feather and large spots.	Henry George
39	SQ 10G 376-13	Normal Sky Blue	H	Nice style with blow and directional feather.	Henry George
40	SQ 10G 269-12	Recessive Pied Grey Green	C	Good length and blow, and very good markings.	Henry George
41	SQ 10G 328-13	Opaline Sky Blue	C	A clean opaline with blow and good mask & spots. From a top pair. Brother is show champion.	Henry George
42	SQP7 074 2013	Clerabody Yellow	C	Solid Bird with deep yellow body colour	L & F Percy
43	SQP7 045 2012	Clearbody Yellow	C	Uncle to above bird plucked on wing as a baby	L & F Percy
44	SQP7 012 2014	Opaline Cinnamon Grey Green	C	My Opalines go back to the first Scottish imports in 1994	L & F Percy
45	2012 GO 033	Grey Green	H	Bred by Geoff O'Connor Newcastle	Ernie Wise NSW
46	2013 20W 110	Dilute Grey Yellow	H	100% Peter Dodd – From a pair of Peter Dodd blackeyes	Ernie Wise NSW
47	2013 20W 178	Double Factor Spangle White	H	Bred from a pair of Alan Drueryu Spangles	Ernie Wise NSW



United Budgerigar Society's **Diploma & UBC Show**

Adults, Young & UBC birds. + Variety awards for shield classes Young & UBC.

QUALITY TROPHIES

**North Lalor Secondary College, 114 Childs Road, Epping
(Melway map 9 D2)**

SUNDAY 14th SEPTEMBER, 2014

Incorporating

"Victorian BRASEA Variety Award Championships"

&

"Victorian CBSA Championship"

"BRASEA" (Rare's Society) Variety Award Championship - Trophy & Rosette to each Rare's any age (young or Adult) variety winner.

The varieties included – Blackeye, Dilute, Greywing, Fallow, Recessive Pied, Dark Eyed Clear & Crest plus "Champion Rares Award".

A "CBSA" (Clearwing Society) Rosette will be awarded for each Section both UBC & any age (young or Adult) Clearwing. Trophies will be awarded for the "Best Clearwing in show" and "Best Opposite Sex Clearwing in show".

- **FREE lunch for travelers. Exhibitors from Clubs based over 80km from Melbourne will receive FREE lunch with compliments of "United" as a token of our appreciation for your support.**
- **Phone & email entries at a cost of \$1.00 per bird, prior to the day (maximum of \$20.00) are to be forwarded to Vic Murray Email vic.murray@internode.on.net. OR Ph: 0394359369 Mob: 0414344081 Phone entries accepted on THURSDAY 11TH, FRIDAY 12TH AND SATURDAY 13TH SEPTEMBER, FROM 7PM – 9PM. Additional entries will be accepted on the day of the show up until 9am, at a cost of \$2 per bird (\$20 maximum)**

IT IS REQUESTED THAT IF POSSIBLE, ALL ENTRIES BE MADE VIA EMAIL.

Enquiries: Show Manager - David Spink 0427177988
Show Secretary - Vic Murray 0394359369 or 0414344081
President – Alan Baxter 0394383589

48	6S 40 2013	Blackeyed Yellow	C	Sire 6S.15.12 White Sky Dam 6S.151.10 Blackeye Yellow	Peter Schellbach
49	6S 19 2014	Clearwing Green	C	Sire 6S.038.09 Clearwing Lt Green Dam LD1.031.12 Clearwing Dk Green/blue	Peter Schellbach
50	SQ 2014 12014	Yellowface Grey	C	George / Stephan bloodlines	Wayne Stephan
51	SQ 2012 2954	Spangle Grey Green	H	Dunk / Stephan Bloodlines	Wayne Stephan
52	SQ 2013 4325	Opaline Dominant Pied	C	Gazzard / Stephan bloodlines	Wayne Stephan
53	2013 18007	Dark Green	C	Fostered bird and forgot to write it in. DOB July 2013 – E&L Miller & Gzzard bloodlines	Bill Kirstenfeldt
54	2011 084	Opaline Cinnamon Grey Green	H	DOB 8/2/11 H George / Hollingsworth Good Mother & fertile	Bill Kirstenfeldt
55	2013 123	Yellowface Sky	C	DOB 5/5/13 E&L Miller / J Scoble not used	Bill Kirstenfeldt
56	12 / 007 BMW	Dilute Green	C	Reserve for NSW at 2013 Nationals	Brian Walters NSW
57	13 / 005 BMW	Spangle Yellowfaced Grey	C	Deep mask & Good face	Brian Walters NSW
58	12 / 165 BMW	Cinnamon Light Green	C	Brother of 3 rd Placed Cinnamon Opaline (hen) at 2013 Nationals	Brian Walters NSW
59	DGH132-2013	Normal Sky Violet	C	Father was Henry George Normal Green 10G 9-093 and mother was my Opaline Cinnamon Grey Green DGH 12-047 which ran 12 th at 2013 Nationals	HARRO (ACT)
60	DGH087-2013	Cinnamon Grey	C	Henry George Gary Watson Mario Capasso bloodlines	HARRO (ACT)
61	DGH004-2014	Opaline Grey split Lacewing	C	Father Lacewing from my Ian Hanington line. Mother was Opaline Grey from Gordon Chandler	HARRO (ACT)
62	EUG 156 2013	Grey Green / Lutino	C	Sire Lutino Dam Dark Green Maiden cock, line bred Balanced cock with good wings and depth above and behind the eye	Andrew McFarland NSW
63	EUG 120 2013	Cinnamon Grey	C	Sire Grey / Opaline / Cinnamon / blue Dam Cinnamon Grey Green Maiden cock Deep mask, nice round spots, small wings with nice face	Andrew McFarland NSW
64	1W 205 2012	Spangle Cinnamon Grey	H	Nice type hen from Garry Watson Plenty of mask and spot	Andrew McFarland NSW
65	1W 095 2012	Opaline Green	H	Garry Watson hen – one round taken this season, well proportioned hen typical of Garry's birds	Andrew McFarland NSW
66	LJR031-13	Opaline Cobalt	C	Sire 3b175-10 Normal Grey, Dam Ljr006-12 Opaline Grey	Lyle Reibelt

Elenbee Bird Supplies

ABN:32 534 212 454

Unit 13/38 Powers Rd, Seven Hills NSW 2147

Phone/Fax: 02 9624 5129

Web: www.elenbeebirdsupplies.com.au

Business Hours: Tuesday – Friday 9am - 5pm Saturday 9 – 1pm
Closed Sunday & Monday

SPECIALS!

Breeder Wire Cage Boxes of 6 \$150.00 Black Only

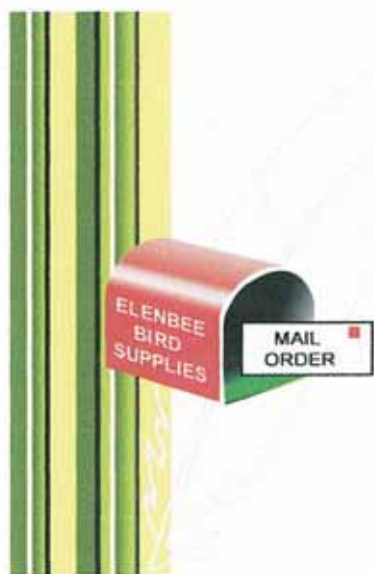
F10 Sc 200ml now \$25.00

BVM Powder 2kg & 4kg Buckets 10% off

Apple Cider Vinegar with Garlic 2lt \$17.00

Attn All QLD customers: order 1 week Prior to Events Please

Hurry Specials Only Available While Stocks Last



Elenbee **BIRD SUPPLIES**

**YOUR ONE STOP BIRD SHOP &
MAIL ORDER SPECIALISTS**

Ph: (02) 9624 5129

www.elenbeebirdsupplies.com.au

67	LJR071-10	D/Factor Spangle White	C	Sire Cb093-7 Spangle D/Green, Dam Cb074-7 Spangle Cobalt	Lyle Reibelt
68	AH101/12	Cinnamon light green	H	Nice hen good blow, spots and mask, from 2 – National cinnamon line	Abi Haider
69	AH148/13	Clearbody, opaline green	C	Stylish bird, lovely colour, spots and blow hatched 24/8/13 not used	Abi Haider
70	5205/13	Albino	H	Young hen, good size, from family of 7th at National, hatched 30/4/13, not used	Abi Haider
71	13 WRB AK- 188	Normal Sky	H	Lovely clean headed hen with directional feathering	Alan Kent
72	13 WRB AK- 84	Normal/Greywing Green	C	Very good Normal and also split Greywing	Alan Kent
73	13 WRB AK- 104	Spangle Grey Green	H	Super top end	Alan Kent
74	26H 068-13	Opaline Dominant Pied Light Green	H	SIRE: Opaline Dominant Pied Sky Blue No 26H 222-10. DAM: Normal Greygreen No 26H 094-12	Don Harper
75	26H 088-12	Opaline Dominant Pied Greygreen	C	Brian Walters/Don Harper bloodlines	Don Harper
76	26H 062-13	Recessive Pied Sky Blue	C	Full brother to Best Young Recessive at NBBA Show Wauchope 2014. John Carter/Don Harper bloodline	Don Harper
77	12 BMW 054	Cinnamon Light Green	H	Donated by Brian Walters to Northern NSW Budgerigar Club	Northern NSW Budgerigar Club
78	13 SKF 082	Cinnamon Sky	H	Donated by Steve Kilduff to Northern NSW Budgerigar Club Sire Cin Sky..B.Walters...Dam Sky Norm...A.Kent.	Northern NSW Budgerigar Club
79	SQ 12 TT 156	Cinnamon Grey	C	Treva Turner bird, never used	Scott Eriksen
80	SQ 12 1JJ 109	Spangle Double Factor Yellow	C	MacAllister bird, never used	Scott Eriksen
81	NSW 12 TYS 080	Normal Grey	C	100% Henry George Bloodline, never used	Scott Eriksen
82	14 TT 006	Yellow Lacewing	H	Very Nice Hen	Treva Turner
83	14 TT 020	White Double Factor	C	Very Young Will Mature Nicely	Treva Turner
84	10G 11 203	Cobalt	C	Purchased Last Year	Treva Turner
85	12 MC1 058	Spangle Double factor Yellow	C	Top bird, 100% Gazzard. Cousins were last years national winning and 3rd place bird for WA	Mario Capasso
86	12 MC1 110	Opaline Grey Green	H	Off my Capper / Gazzard line. Strong head and face. Does not grow a tail baut hasn't produced any feather problems in the 2 rounds that I used her. Very good mother	Mario Capasso

87	13 MC1 054	Recessive Grey	C	Missing some flights on one side and some flecking. Otherwise, has a lovely head and face with perfect markings. Cousin to the Recessive hen in this auction. Has bred well for me	Mario Capasso
88	KV-23-14	Opaline Dark Green	C	Sire purchased from Ken Dunk	K&V O'Reilly
89	KV-113-13	Opaline Cinnamon Green	H	G. Watson Bloodline	K&V O'Reilly
90	No Ring	Pied Greygreen	C	Missed ringing this one is a 2014 bird Hatched October	K & V O'Reilly
91	2013 1G 042	Sky Fallow	C	Sire: 09 1g 025 Fallow Sky Gough Line Dam: 11 1g 069 Sky/Fallow Gough/Horrobin Hatched 06/12/2012 2013 1g 042 & 2013 1g 066 Are Siblings	K & C Gough BNSBS Inc
92	2013 1G 052	Opaline Cinnamon Greygreen	H	Sire: 10 1g 001 Cin Pied Green/Opaline: George/Gough Dam: 12 1g 022 Dark Green George/Gough Hatched 25/01/2013	K & C Gough BNSBS Inc
93	2013 1G 054	Cinnamon Blue	C	Hatched 25/01/2013 Sire: 11 9048 Yellowface Grey Winch Line Dam: 10 6404 Cin Blue Winch Line 2013 1g 054 & 2013 1g 059 Are Siblings	K & Gough BNSBS Inc
94	DP174=2012	Light Green	H	Mannes Blood- Not Used	D&V Punton
95	DP DP097=2013	Cobalt Cinn	H	Dwyer & Oconner – Not Ued	D& V Punton
96	DP 297=2013	Grey Green Opaline	H	Oriley-Seagrott- Good Feather With Blow	D&V Punton
97	DP003/13	Grey Cinn	C	Father 100% Gazard Mother Croft-Oriley, Most Of These Retained* <u>Donated By D & V Punton "Thank You"</u>	BRASEA
98 (PAIR)	KS12/501 KS13/282	Grey Green Spangle Sky Blue Spangle	C H	Big long Bird Good feather texture <u>Donated By Ken Seagrott "Thank You"</u>	BRASEA
99	SQ 9328 / 12	Spangle Light Green	C	Excellent bird. Well bred	Brian Hollingsworth
100	SQ 15352 / 12	Double Factor Spangle Yellow	H	Excellent colour and size. Related to SQ 15522 / 13 (DF Spangle Cock)	Brian Hollingsworth
101	SQ 9337 / 14	Light Green Dominant Pied	H	Very young. Approx 6 months.	Brian Hollingsworth
102	SQ MHG 13 016	Grey Cinnamon	C	Sire Bs2 10 057 Lt Green Op Dam Mhg 12 005 G G Cin	Mick Greber
103	SQ MHG 12 050	Sky Normal	H	Sire Ak 10 017 Sky Nor/Op/Cin Dam Mhg 11 006 Lt Gr Op Cin	Mick Greber

LENTRA BULK BUY SPECIALS

02 6672 6420

ONLINE @ www.lentradirect.com.au

PRODUCT	QTY	PRICE
FALSE BUDGIE EGGS Small	12	\$10
Large	12	\$18
METAL OR PLASTIC CUTTLEBONE CLIPS	12	\$10
FINGER DRAWERS (seconds, will not effect use)	50	\$10
OVAL FEEDERS	12	\$10
EGG & BISCUIT DRAWERS	10	\$15
145ml TUBE DRINKERS	12	\$20
SHOW CAGE DRINKERS	24	\$24
SPLIT PLASTIC RINGS BUDGIE	100	\$25
MASON BASE and JAR COMPLETE	12	\$50
VIRKON SACHET 50grams	6	\$50

ALL PRICES INCLUDE GST.

POSTAGE COSTS ARE NOT INCLUDED.

The above super specials are available until August 31 2014 .
We reserve the right to limit quantity, and specials are subject to availability. **MORE specials online!**

CALL: 02 6672 6420, for postage prices

EMAIL: lentradirect@exemail.com.au

POST: PO BOX 54 MURWILLUMBAH 2484

104	SQ MHG 13 039	Light Green Normal	H	Sire Mhg 12 019 Grey Nor Dam Mhg 13 012 Lt G Op Cin	Mick Greber
105	KS13/233	Lutino	C	Good Deep Colour	Ken Seagrott
106	KS13/500	Lutino	H	-	Ken Seagrott
107	KS13/432	Green Recessive	H	Good Markings	Ken Seagrott
108	KS13/060	Grey Green Cinnamon	H	Ault Bloodlines	Ken Seagrott
109	SQ 8770 - 2013	Normal Cobalt Spangle	H	Good solid hen. Have bred with her very successfully.	Jamie Wright
110	KV 093 - 2012	Banded Dominant Pied Sky	C	Import from K&V O'Reilly. Watson bloodline. Very fertile.	Jamie Wright
111	SQ 9318 - 2012	Opaline Lacewing Yellow	H	Very large buff hen. Great length of body and blow. Have bred successfully with this hen and retained young. Good mate for Split in this Auction SQ 9591 - 14	Jamie Wright
112	1JJ-043-13	Spangle Opal Light Green	C	Sire.10G-398-08 D/F/S Yellow Dam.1JJ-198-10 Spangle Cinn Opal Light Green Gazzard George McAllister	J&J McAllister
113	1JJ-124-12	Abino	H	Sire.1JJ-139-07 Abino Dam.1JJ-109-11 Abino	J&J McAllister
114	1JJ-020-13	Spangle Cinn Light Green	H	Sire.1JJ-023-11 Y/F Sky Blue Dam.1JJ-166-11 D/F/S Yellow	J&J McAllister
115	11-193	Greywing Green	C	Bought as an outcross. A well blooded bird. Not used and reducing greywings	O'Callaghan Family
116	13-1781	Spangle Cinnamon Olive	H	Typical of double dark factor bird, she is smaller in stature. Should produce nice birds. Good opportunity to add dark factor quickly to your stock.	O'Callaghan Family
117	13-035	Dilute Opaline Grey Green	H	Dilute hen bred from Card outcross. Has outstanding normal and opaline brothers and sisters, all with lovely feather length.	O'Callaghan Family
118	SQ-5387-2013	Opaline AOSV Y/Face Grey	H	This hen has very nice presence on the perch. Strong hen with shoulder. Watson lines.	A & A Francis
119	AAA-024-2012	Cinnamon G/green	H	Line bred hen from my lacewing line. Cousin to cousin pairing. Good quality hen closely related to Jamie Wright's National line.	A & A Francis
120	AAA-038-2012	Dilute Sky Blue	H	Top line hen for a lesser variety. Good length, shoulder and head qualities.	A & A Francis
121	VP-017-13	Spangle Grey	C	Dunk	Shane Von Pein

Breeder's Quality

GOLDEN COB[®]

GOLDEN COB knows birds best.

"Since 1895 we have been producing the GOLDEN COB Breeder's Quality range of seed mixes to provide Australian birds with the nutrition they need for health and vitality.

Developed by reputable breeders and avian experts, each of our 8 popular breeder mixes combine a consistent blend of carefully selected quality seeds, with vitamins A, D, & E plus Iodine.

Ask for GOLDEN COB Breeder's Quality seed mixes at your preferred breeder, pet or rural outlet. Available in 2kg, 5kg and 25kg packs.

Look for me on the pack!"

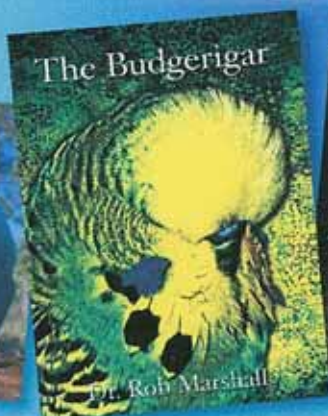


® Registered Trademark. © Golden Cob 2008. STA 7065

www.goldencob.com.au

122	VP-049-13	Opaline Grey Green	H	Scoble / Smith	Shane Von Pein
123	SQ 13 14222	Grey normal/Albino	C	Developing into nice type bird Donated by Graham Barlow	Fraser Coast Budgerigar Society
124	SQ 14 1002	Dilute Blue	H	Bred out of Greywing line Donated by Barry Prange	Fraser Coast Budgerigar Society
125	SQR1014034	Opaline Cinnamon Lt Green	H	S: Cin Grey SQR109065 D: Opal Cin Lt Gm SQR1010051 Good spot, nice brow. Very young. Brother won Champion N/F at ABS Annual Show. Gazzard/Tuthill bloodlines down from \$4000 Gazzard cock. Very young.	W & G Robinson
126	SQR1014002	Recessive Grey Green	H	S: Rec Grey Grn SQ01219303 D: Lt Grn/Rec SQ0117182 Spot, but heavily marked. Super bloodline. Sister Champion N/F of show at Toowoomba Annual. Sister to best recessives breed this year. 50% VG O'Reilly bloodline. Sister to lot #10	W & G Robinson
127	SQR1014015	Lutino	C	S: Lutino SQR1012098 D: Lutino SQR1012010 Rich Colour, blow, super bloodline. Young bird. Sire is brother to 1 st placed cock at SQBBA in 2013. Dam is aunty to best hen bred in 2014. Young.	W & G Robinson
128	13 SQ 9242	Green Fallow	H	Sky Fallow Cock 11 G&J 039 Lt Green/Fallow Hen 11 G&J 141	Greg Horrobin
129	13 SQ 9215	Green Fallow	C	Sky Fallow Cock 11 G&J 039 Lt Green/Fall Hen 11 G&J 141	Greg Horrobin
130	13 SQ 9181	Violet	H	Violet Cock 10 G&J 089 Cobalt Opaline Hen 11 G&J 076	Greg Horrobin
131	KWC 065 – 2013	Normal Cinnamon Light Green	H	Sire: Norm Cinn Lt Green (1W118/09 – Watson) Dam: Opal Lt Green (Hollingsworth) This hen has not been used.	Kev Campbell
132	KWC 086 – 2013	Normal Violet	H	Sire: Norm Violet Dam: Opal Sky Pied Horrobin x Toombs breeding. Top quality breeding.	Kev Campbell
133	SQ 1708 – 2012	Opaline Violet Pied Split INO	C	Sire: Opal Lt Green/Blue/INO (Costa & Anderson) Dam: Opal Violet (W Stephan) This bird has done very well both on the show bench and in the breeding cage. Only selling because of the INGO as I don't breed INO's! Brother to SQ1713/12	Kev Campbell

*Please keep saving **STAMPS** for our Charities and send them in anytime
They and we appreciate your support for these worthy causes*



Bird & Reptile PRODUCTS

Now Available from ABK

Order online at

www.birdkeeper.com.au

Click Bird & Reptile Products Tab



SUBSCRIBE NOW!

Print Subscriptions

available worldwide

www.birdkeeper.com.au

Digital

(3 or 6 Issue Subscriptions)

available worldwide

www.ilovemagazines.com.au



Order Now at www.birdkeeper.com.au



Phone: 07 5568 0011 • Fax: 07 5568 0300

email: birdkeeper@birdkeeper.com.au

You can now follow us on Facebook and Twitter



134	DKP - 019 / 2014	Skyblue Normal	C	Sire:- (Grey Normal) 100% Mark & Rebecca Fellows Dam:- (Yellowface Grey Cinnamon) 100% Allan & Chris Druery Dam was granddaughter to Allan & Chris National winner (ACD-169/2008). Hatched:- 01/09/2013	Peters Family
135	DKP - 061 / 2014	Greygreen Opaline / Blue	C	100% Mark & Rebecca Fellows Hatched:- 29/10/2013 Retained all brothers & Sisters that are blue series & with clean heads. Retained both parents as well.	Peters Family
136	DKP - 057 / 2013	Green Normal / Blue	C	Sire:- (Green Normal) 100% Gary Watson Dam:- (Yellowface Blue Opaline) 100% Allan & Chris Druery Unused.	Peters Family
137	FBA 013 - 13	Spangle Light Green	C	Ken Dunk/Watson. Quality bird good size.	Barry Mitchell
138	FBA 070 - 13	Sky Blue	C	Hollingsworth/Watson. Height above perch.	Barry Mitchell
139	SQ 7395 - 13	Opaline Grey	C	Good blow, nice face.	Barry Mitchell
140	SQ 10G 148-13	Recessive Pied Grey	C	Large bird with directional feather and good markings. Brother to 10G 146-13.	Henry George
141	SQ 10G 382-13	Lacewing Yellow	H	Good markings and spots. Sister to 10G 388-13.	Henry George
142	SQ 10G 165-12	Recessive Pied Dark Green	C	Large bird with good head and good markings. Kept to breed from but not used.	Henry George
143	SQ 10G 104-13	Lutino	H	A solid hen with good head width.	Henry George
144	2012 TT 068	Blackeye	C	Bred by Treva Turner Qld – not used	Ernie Wise NSW
145	2012 NSW 4754	Cinnamonwing Grey	H	Bred by Kevin Edwards – not used	Ernie Wise NSW
146	2012 NSW 4837	Opaline Skyblue	H	Bred by Kevin Edwards – not used	Ernie Wise NSW
147	2013 NSW 802	Opaline Cinnamon Grey Green	H	Bred by Kevin Edwards – not used	Ernie Wise NSW
148	SQ 2012 009	Light Green	C	Bob Smith bloodlines	Wayne Stephan
149	SQ 2012 3742	Opaline Grey	H	George / Stephan bloodlines – not used	Wayne Stephan
150	2012 110	Lacewing Yellow	H	G Watson x Kirstenfeldt not used DOB 14/3/12	Bill Kirstenfeldt

All our articles and photos are in full colour on the Web – site

JUNIOR PRESIDENT “Sophie Hollingsworth” Column

Hello

In this article I will be talking a lot about my birds. As I mentioned in the previous article I'm trying to breed recessive peds. I'm finding out that this is easier said than done. I've got other varieties as well, but the recessives will be my main focus. The thing I like most about this variety is the markings on their wings and mask. At the moment I would have about ten breeding pair, which includes three recessives cocks and about five split recessive hens. I am hoping to buy a nice recessive cock at the Brisbane BRASEA auction on July 19th.



This violet recessive cock is out of a split recessive hen I bred last year and a recessive cock that Colin Woodman gave to me when he stopped breeding birds.

This bird is about five months old and is starting to mature into quite a nice bird.

My cousin (Riley Lewis) has just started to breed dominant peds and Pop took us both to a lawn show last month with two birds each. We both won our colour class and as you can see in the picture below Riley was quite happy with his efforts. My twin brother Jake has also just started to get into the budgies. I gave him a hen bird I bred and Pop gave him a yellow face cock. I'll talk more about Jake in the next bulletin as I'm going to do an interview with him.



My cousin Riley bred a grey cock from his dominant pied line. As you can see the bird was over it by the time we took a photo.

151 (PAIR)	2012 074 PAIR 2013 108	Clearwing Dark Green Clearwing Darkj Green	C H	H George x Kirstenfeldt very good fertile father DOB 20/1/12 DOB 1/4/13 Sire from SA S10GB7- 477, Dam Kirstenfeldt unused	Bill Kirstenfeldt
152	12 / 077 BMW	Double Factor Spangle Yellow	H	Good colour Solid bird	Brian Walters NSW
153	12 / 068 BMW	Dilute Yellowfaced Grey	H	Bred good young ones	Brian Walters NSW
154	DGH123-2013	Clinnamon Light Green	H	Good stock hen from my Henry George and Jim L'Estrange lines.	HARRO (ACT)
155	DGH042-2013	Normal Grey Green	C	Henry George-Ken Seagrott Gary Watson lines	HARRO (ACT)
156	EUG 074 2013	Spangle Melanistic Sky	C	Very fertile and good father 25% Gary Gazzard Violet Melanistic Spangle	Andrew McFarland NSW
157	EUG 219 2012	Opaline Skyblue / Albino	C	Sire John Hewitt Albino Dam Opaline Grey – Outcross to John Hewitt quality Albino to start my Albinos. Hes slow but worth it. Long Large bird, a quality split Albino	Andrew McFarland NSW
158	EUG 273 2013	Opaline Grey Green	C	Sire Grey Green Opaline Pied Dam Grey Opaline Cinnamon – Maiden cock. Heavily line bred. Father was nest brother to my 5 th placed National Pied Canberra . Quality top end with good mask and spot	Andrew McFarland NSW
159	G&T 080 2010	Grey Pied	C	Quality G&T Sinclair bird which is my bloodline, he is heavily line bred with a nice face and mask. Same age as my National Pied, this bird finished 2 nd to my Pied at the same Show	Andrew McFarland NSW
160	EUG 316 2013	Cinnamon Grey	C	Sire Green Dam Cinn Grey Maiden cock with a nice step in the wing. He is a typey bird and well proportioned. Tightly line bred	Andrew McFarland NSW
161	5210/13	Clearbody, Green	H	Good size and spots, hatched 16/6/13, not used	Abi Haider
162	5217/13	Grey	H	Stylish bird, good size and spots, hatched 24/5/13, not used	Abi Haider
163	AH087/14	Clearbody, yellow face, blue	C	Young bird, hatched 18/12/13, not used	Abi Haider
164	13 WRB AK- 14	Cinnamon Sky	C	Quality bird with lovely length of feather, only recently lost tail	Alan Kent
165	13 WRB AK- 194	Greywing Grey Green	H	Super face . One of the nicest Greywing hens I have seen of late	Alan Kent
166	11 WRB AK- 09	Normal/Greywing Green	C	George / Seagrott Bloodlines, foundation	Alan Kent
167	13 WRB AK- 50	Spangle Opaline Grey Green	H	Showy hen with good markings	Alan Kent

This year I started to breed all year round. I guess I didn't really know that you could do this. The previous years I would start pairing the birds up in August/September and finish up by January/February. So far it seems to be working better for me to pair birds together as they look ready to breed. This means I get to hold and cuddle babies all year round and I have them hatching out everywhere.

I am breeding lots of cinnamons and some of them are the best birds I have bred yet. The hen that's breeding some of the good babies came from the last BRASEA auction. It was one of Pops birds that for some reason didn't get much interest. Pop bought the bird back for \$70 and gave it to me. Lucky me! Here are a couple of nice nest feather hens in the photos below. These are about four week out of the nest and I've been getting them use to the show cage. The bird on your left is out of the sky blue hen from Jamie Wright I told you about last time. I hope to get these in the shows that are coming up, but they will probably be too old for nest feather or not old enough for young birds. In the last article I said I had bred (black ring) 44 babies, I'm now at about 55.



I find it very fun breeding budgerigars and whenever my friends come over they are all very interested in what I'm doing. I will keep trying to encourage other young people like myself to get involved. One thing that I think stops young people getting started with budgies is all the things you need when you get started. Even though I breed out of a garden shed dad told me that it and the aviary would cost well over \$1000. So to get young people started we need to think of ways to help them. This might even mean letting them have a couple of pair breeding at your place to start with. They could come over after school or on the weekend and look after them as well as help you with your birds. This way they are learning as they go. Once they get hooked they will

168	13 3R 137	Cinnamon Sky	C	Donated by John Richardson to Northern NSW Budgerigar Club. Sheppard and Flanagan Bloodlines.	Northern NSW Budgerigar Club
169	13 3R 012	Grey Green Cinnamon	H	Donated by John Richardson to Northern NSW Budgerigar Club. Sheppard and Flanagan Bloodlines.	Northern NSW Budgerigar Club
170	QNC SE 14 721	Cinnamon Sky	C	Young Cock, still developing	Scott Eriksen
171	QNC 13 SAE 616	Normal Yellowface Skyblue	C	Tonkin x Kakoschke line	Scott Eriksen
172	QNC 13 SAE 653	Fallow Skyblue	C	-	Scott Eriksen
173	12 TT 077	Yellow Opaline Lacewing	H	Aunty Of TT 006	Treva Turner
174	13 TT 082	Opaline Cinn Grey Green	C	Kept This Bird On Breeding Not Looks 50% Dunk 50% Bob Smith	Treva Turner
175	13 TT 031	Yellow Face Sky	C	Henry George Bred	Treva Turner
176	14 TT 052	Sky	C	Father In This Auction J&S 260	Treva Turner
177	13 MC1 024	Recessive sky	H	Father was NSW State winner and 2nd at last years nationals. I have used this hen for 2 rounds earlier this year. Great mum.	Mario Capasso
178	13 MC1 078	Normal Grey	C	Off my top Chidel / Gazzard line. Family is multi award winning	Mario Capasso
179	13 MC1 092	Spangle dark Green / Violet	H	From my George / Gazzard line. Was feather plucked as a baby and has some slight damage to wing butts. A lovely hen with strong face. Maiden	Mario Capasso
180	KV-36-13	Lt.Green/Recessive Pied	H	Nice type	K & V O'Reilly
181	KV-71-13	Pied Sky	H	-	K&V O'Reilly
182	2013 1G 059	Yellowface Blue/Cinnamon	C	Hatched 29/01/2013 Sire: : 11 9048 Yellowface Grey Winch Line Dam: 10 6404 Cin Blue Winch Line 2013 1g 054 & 2013 1g 059 Are Siblings	K & C Gough BNSBS Inc
183	2013 IG 066	Fallow Blue	H	Hatched 10/02/2013 Sire: 09 1g 025 Fallow Sky Gough Line Dam: 11 1g 069 Blue /Fallow Gough/Horrobin 2013 1g 042 & 2013 1g 066 Are Siblings	K & C Gough BNSBS Inc
184	DP 165= 2012	Grey Cinn	H	Croft- Gazzard- Nice Hen With Face	D&V Punton
185	DP247=2012	Light Green Spangle	H	Croft – Oriley - Light Fleck But Nice Top	D&V Punton

find a way to make it work at their own place. This will probably involve nagging their parents to death, like I did.

With Warren's help *I want to email as many Budgerigar clubs as possible and ask them how many juniors they have and what they do to attract and keep them. I think it's important to know how many young people are involved.*

We can then do this each year and see if the number is increasing or decreasing. We need young people to make sure there is a strong future for budgie breeding as well as the clubs.

Quiz!

Recently I have been learning about percentages at school and this helps me a lot when I am looking at how many of a variety I should get when I pair my birds. *When you pair a recessive cock with a split recessive hen what percentage of the babies should be recessive?*

The first junior to email me the correct answer to paul_jody@optusnet.com.au will win a \$10 iTunes voucher.

Also don't forget, any juniors who need to ask anything or contact me you can reach me at paul_jody@optusnet.com.au



The Canary & Cage Bird Federation of Australia Inc.

We represent bird clubs & their members in all facets of aviculture throughout Australia, supporting all State Avicultural Councils and representative bodies at all levels of Government.

We would be pleased to assist your club with any issues, and would also like the opportunity to provide your club with public liability insurance cover.

Our cover has a "broadform member to member" cover, which is important for all Clubs

For details contact the **Secretary Ron Robertson Tel. 02 9452 2396**

Email: birdclubs@aapt.net.au

President : Warren J Wilson

186	DP049= 2013	Grey Normal	H	Watson Blood- Big Hen With Some Fleck	D&V Punton
187	No Ring	Aussie Bush Budgie	C	From a 40+ year old Colony which has mutated into several natural colours and varieties – <u>Donated By Wilson Family</u> <u>"Thank You"</u>	BRASEA
188	SQ 9309-2014	Light Green Normal	C	Very young. Long bird. Will develop more yet.	Brian Hollingsworth
189	SQ 9507 / 14	Opaline Grey Green	H	Shows well with heavily spotted mask and blow. 6 months old.	Brian Hollingsworth
190	SQ 15517 / 12	Cinnamon Sky Blue	H	Large bird but won't grow tail. Buff feathering.	Brian Hollingsworth
191	SQ MHG 13 024	Sky Opaline	H	Sire Mhg 10 044 Grey Nor /Op Dam Mhg 10 024 G G Op Cin	Mick Greber
192	SQ MHG 13 032	Sky Normal	H	Sire Mhg 08 035 Sky Nor Dam Mhg 12 050 Sky Nor	Mick Greber
193	SQ MHG 13 001	Grey Normal	C	Sire Mhg 10 022 Sky Nor Dam Mhg 10 043 Grey Op No Tail	Mick Greber
194	KS13/594	Grey Green Normal	H	Big Hen long feather unused	Ken Seagrott
195	KS13/507	Sky Blue Opaline	H	25% Watson	Ken Seagrott
196	KS13/317	Violet	H	Good stock bird	Ken Seagrott
197	KS11/458	Lutino	C	Has bred many quality young	Ken Seagrott
198		Opaline Cinnamon Light Green split Lacewing	C	Typy bird from my best Lacewings Good mate for Lacewing hen in this Auction SQ 9318 - 12	Jamie Wright
199	SQ 9563 - 2014	Opaline Violet	C	Vivid colour. Good body length and nice spot. Balanced bird. Have retained many siblings.	Jamie Wright
200	SQ 9591 - 2014	Normal Sky	H	Lovely hen with good head qualities. Has bred successfully. Cousin to Sky Cock 14560 - 13	Jamie Wright
201	SQ 10G 024-13	Recessive Pied Violet Dark Green	C	Good size.	Henry George
202	SQ 10G 250-12	Normal Sky Blue	C	A top quality bird with size, directional feather, blow, deep mask and large spots. Kept to breed from but not used.	Henry George
203	SQ 10G 021-13	Recessive Pied Light Green	H	Has full set of large spots.	Henry George
204	SQ 10G 028-13	Lacewing Yellow	C	Good head and strong markings & spots.	Henry George
205	SQ 10G 146-13	Recessive Pied Grey Green	C	Good size, markings, head blow and directional feather. Brother to 10G 148-13.	Henry George
206	2012 GD 080	Opaline Light Green	H	Bred by Guy Dening – not used	Ernie Wise NSW



The
wait is
OVER

Avimec IS HERE

Beat SCALEY FACE MITE for good!

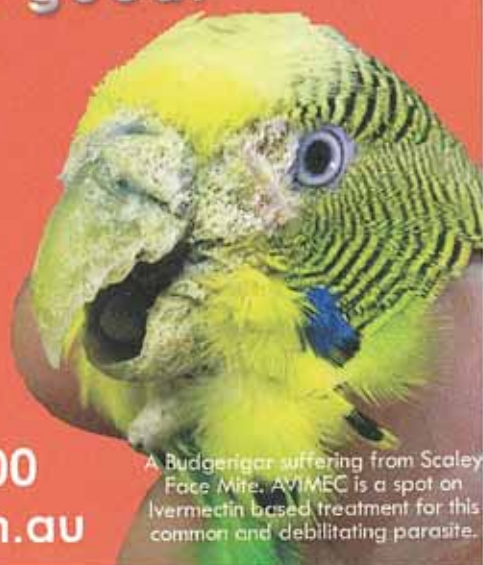
- Spot on Scalp Face Mite treatment
- Tried, tested. Effective and safe
- Formulated by Avian Veterinarians



You Tube

www.youtube.com/vetafarm

Ph: (02) 6933 0400
or visit
www.vetafarm.com.au



A Budgerigar suffering from Scaly Face Mite. AVIMEC is a spot on Ivermectin based treatment for this common and debilitating parasite.

207	2013 NSW 957	Opaline Cinnamon Light Green	H	Bred by Kevin Edwards – not used	Ernie Wise NSW
208	2012 20W 171	Dilute Grey Yellow	C	Cousin to National Dilute hen placed 6 th in Toowoomba	Ernie Wise NSW
209	EUG 343 2013	Violet Grey / Opaline	C	Sire Grey / Cinnamon Dam Opaline Mauve. Closely line bred maiden cock. Should be carrying some nice features, solid long bird with nice wings	Andrew McFarland NSW
210	10G 083 2011	Yellowfaced Grey	H	Super hen from Henry George Qld. Slow but worth it, She breeds without full colour in the cere. Brought as an outcross and she has given me what I wanted	Andrew McFarland NSW
211	EUG 101 2013	Opaline Violet	H	Sire Olive / Opaline Dam Opaline Grey Father was a nest brother to my National 4 th placed Opaline hen last year. Two rounds taken last one was just before Christmas 2013	Andrew McFarland NSW
212	EUG 034 2013	Grey	H	Sire Green Spangle Dam Grey Opaline One round taken this season in Nov 2013. Line bred hen from Sinclair blood which goes back to mostly Garry Watson and Mannes import lines	Andrew McFarland NSW
213	EUG 044 2013	Grey	H	Sire Grey Green Dam Grey Spangle Sister to EUG 076 -13 & EUG 083 -13 in this Auction One round taken. She is line bred, has nice shoulder and is a good parent	Andrew McFarland NSW
214	14 WRB AK-03	Spangle Dark Green	C	Dark factor with potential to mature into top rank	Alan Kent
215	13 WRB AK-167	Opaline Green	H	Powerful hen from my best bloodlines	Alan Kent
216	13 TT 085	Yellow Double Factor	H	Lovely Soft Feather	Treva Turner
217	13 TT 004	Cobalt	C	Long Bird	Treva Turner
218	13 QNC 2014	Opaline Cinnamon Grey Green	C	Shared Nest, From A Pure Watson Cock	Treva Turner
219	13 MC1 125	Nomal Sky	C	Off my top Chidel / Gazzard line. Family is multi award winning	Mario Capasso
220	13 MC1 032	Opaline Green	H	Off my Capper / Gazzard line. Maiden	Mario Capasso
221	13 MC1 101	Cinnamon Sky	C	Father was Jim LeStrange Multi Grand Champ winner and second and ANBC. Mother was sister to Gearing second cinnamon at Geelong Nationals. Half brother to Cinnamon hen 13 MC1 009	Mario Capasso
222	KV-62-13	Lacewing White	H	Good spot and markings	K&V O'Reilly

“BRASEA” OCTOBER SYDNEY AUCTION

Sunday 12th October, 2014

**Venue:
Masonic Hall
480 Forest Road, Bexley**



**Viewing From 8 am
Auction Commences at 9 am**

Enquiries:

**warren@brasea.com
phone 02 9747 6642 0418 916685**

ST.GEORGE BRANCH BSNSW AUCTION NIGHT

Friday 15th August, 2014

**Venue:
Bexley School of Arts,
476 Forest Road, Bexley**



**St.George Members
only selling birds**

**Viewing From 7 - 8 pm
Auction Commences
approx. 8pm**

**Payment by Cash or Visa &
Mastercard + 5% Bank fee
Cheques only by arrangement**

Enquiries:

**Bruce & Nola Bradford
Tel: 02 9344 0779**

223	KV-25-14	Yellowface Sky	C	Could be split opaline	K & V O'Reilly
224	DP281= 2013	Grey Green Cinn	H	Mannes Blood- Very Nice Hen	D&V Punton
225	DP 090= 2013	Sky Spangle	H	My Best Spangle Line Best Young Hen In Show & Best Opp Sex In Show, 8 th In Nsw Hen Class	D&V Punton
226	SQ 17898 / 12	Light Green Normal	H	Good spots and mask.	Brian Hollingsworth
227	SQ 15522 / 13	Double Factor Spangle Yellow	C	Excellent size and feather. Related to SQ 15352 / 12 (DF Spangle Hen)	Brian Hollingsworth
228	SQ 9100 / 12	Spangle Cinnamon Grey	H	Strong hen related to SQ 15352 / 12 & 15522 / 13, my two DF Spangles in this Auction.	Brian Hollingsworth
229	SQ 13 8759	Light Green Spangle	H	Jamie Wright Hen Breeds Well	Mick Greber
230	SQ MHG 13 031	Grey Normal	C	Sire Mhg 11 024 Grey Nor Dam Mhg 12 042 Lt Green Nor	Mick Greber
231	KS13/152	Clear Body	C	Very clean bird	Ken Seagrott
232	KS13/548	Violet	C	Deep rich colour - unused	Ken Seagrott
233	KS13/571	Grey Recessive	H	Not big hen but perfectly marked	Ken Seagrott
234	Nsw1376	Sky Blue Cinnamon	H	Bred by Tony Croft	Ken Seagrott
235	SQ 14560 - 2013	Normal Sky	C	Large bird. Have not used. Cousin to Sky Hen 8852 - 13	Jamie Wright
236	SQ 9571 - 2014	Normal Violet	C	Excellent colour and good body length. Down in head qualities but good for any Violet breeding program.	Jamie Wright
237	1JJ-069-13	Lutino	C	-	J&J McAllister
238	1JJ-015-13	Grey /Ino	C	Sire.1JJ-111-09 Albino Dam.KD-063-10 Normal Grey	J&J McAllister
239	11-235	Spangle Sky	C	Brother was placed 4 th ANBC 2012. Also a half-brother to ANBC Violet winner. Has produced lovely young but time to go. Last used mid 2013.	O'Callaghan Family
240	13- Ring removed	Lacewing White	H	Nice maiden hen with nice markings.	O'Callaghan Family
241	13-2012	Blackeye Yellow	H	A large hen that should be a top stock producer. Not used.	O'Callaghan Family
242	AAA-045-2012	Spangle AOSV G/Green	H	Strong hen with length and shoulder. Nice deep mask. Watson line.	A & A Francis

RE-NEW YOUR MEMBERSHIP TODAY

Handling Budgerigars – Fred Wright

The handling of budgerigars is something experienced fanciers will not think about but ask a first-year beginner and they will not find the task so easy. Its probably best considered by watching an experienced fancier or looking at photographs.

Some people will hold the bird's head between the first and second fingers while others will take the head between the thumb and the first finger. The aim must always be not to damage the bird but it's vital to hold the bird in such a way that it does not bite you. Hens can be difficult to manage so it's worth getting practice with cocks and moving on to hens later.

If you are frightened of the bird you are sure to get bitten. They seem to know and once there is any slight hesitation, they seem to take you and draw blood. It's probably best to take the bird while it's on the floor of a cage rather than on the perch. When you catch a bird with a net, its as well to check which way around the bird is facing and get the bird in the right position as you take it rather than turning the bird while its in your hand. Practice does the job!

I find the most unpleasant way of taking a hen is when you might be standing with a friend – and the friend passes you a hen to look. At that stage, they always seem to bite and it can be very unpleasant. Always be careful and respect the bird.

Handling birds in the nest is a good way to get the bird familiar with being held in the hand. I love to handle my babies while they are in the boxes all the time. If I have the time, I like to train them to stand on the finger and look at the birds carefully. It is one of the great pleasures of breeding good birds – watching them on the finger just before they are old enough to leave the nests. It's a job to be done when you have the time to enjoy them, and not at a stage of the day when you are in a rush to move on to the next job.

Most of us wean our babies and at that point we stop handling them. Some fanciers have the time to keep them tame and it's all the better for the birds if you are able to play with them. They always make better show birds and one fancier in mainland Europe is well known for the way his birds are all finger tame and even as adults, they can be moved about the birdroom, into and out of cages from a finger. It's totally amazing but it just reflects the amount of time and dedication that goes into his budgerigars.

I place my babies into flights from stock cages when they are about 10 weeks old. I catch them, check ring numbers against my record book – check the sex and the colour and make sure all is well with them. When I take babies from the breeding cages I enter them into my record book and at the time I mark the last column of book with a comment about the baby. I either mark it EX for excellent, or VG for very good. When I catch the birds to go

243	SQ-5394-2013	DF Spangle Y/Face	C	Long bird with blow and length of feather on cap. From Watson/Stephan bloodlines.	A & A Francis
244	VP-047-13	Normal Grey	C	Scoble / Smith	Shane Von Pein
245	VP-042-13	Opaline Cobalt	H	Scoble	Shane Von Pein
246	SQR1013028	Lutino	H	S: Lutino SQR1010025 7 th 2011 National D: Lutino SQR1012052 sis to best hen Good colour, solid hen. Super line. A sister sold at 2014 Wynnum auction.	W & G Robinson
247	SQR1012059	Spangle Opaline Grey Grn	H	S:Spangle Grey Grn WRBR1010066 D: Opaline Grey Grn SQR1010101 Sire produced best spangle in 2014. Good variety bird, well marked, target spots. 100% chidel bloodline, family has consistently produced nice birds.	W & G Robinson
248	13 SQ 17368	Sky Spangle	H	Grey Cock 10 G&J 061 Sky Opaline Spangle Hen 11 G&J 079	Greg Horrobin
249	13 SQ 17351	Sky Opline	H	Grey Cock 11 G&J 061 Sky Opaline Spangle Hen 11 G&J 079	Greg Horrobin
250	SQ 1713 - 2012	Opaline Violet Sky Split INO	C	Sire:Opal Lt Green/Blue/INO (Costa & Anderson) Dam: Opal Violet (W Stephan) This bird has done very well both on the show bench and in the breeding cage. Only selling because of the INGO as I don't breed INO's! Brother to SQ1708/12	Kev Campbell
251	SQ 1654 - 2012	Opaline Grey Green Pied	C	Sire: Norm G/Green Pied (Frampton) Dam: Opal G/Green (Treva Turner) This bird has done well on the show bench and breeding cage. Only selling as I have younger peds to take his place.	Kev Campbell
252	DKP - 014 / 2014	Grey Yellowface Cinnamonwing	C	Sire:- (Grey Normal) 100% Mark & Rebecca Fellows Dam:- (Yellowface Grey Cinnamon) 100% Allan & Chris Druery Dam was granddaughter to Allan & Chris National winner (ACD-169/2008) Hatched:- 03/09/2013	Peters Family
253	DKP - 058 / 2014	Cobalt	C	Sire:- (Normal Violet) 50% Allan & Chris Druery & 50% Gary Gazzard. Dam:- (Grey Cinnamonwing) 50% Gary Gazzard, 25% Mark & Rebecca Fellows & 25% Jimmy Estrange	Peters Family

into flights, I take a special look at the birds I have marked for exceptional quality to see how they are progressing.

As I catch them to place them in the flights, I check tails and flights. If anything is broken, I pull it so it will re-grow. I only pull flights and tails if they are fully grown. Any that are still in quill are left as I like to make sure they are fully grown and carry no blood before I pull them. There is a great theory that it is worth cutting a feather to make sure its "dead" for a couple of weeks before its pulled. It's something fanciers should consider again if your birds tend not to re-grow tails and flights. May be this is the subject of another article some time in the future.

I catch the birds in groups of 10 and place them in an all-wire cage. I do the job in the mornings and then spray the birds thoroughly with warm water. I leave them for 10 to 15 minutes and then place them in the flights. It is always a job for the mornings as I have no wish to see wet birds at night. They need to be fully dry before the lights go off.

For me one of the most interesting times of the year is when the daily jobs are done in the birdroom and you have a couple of hours to just "play" with the birds. I love to take a show cage into the flights and start catching birds. I like to run them through my hands, check tails and flights and sometimes place them in a show cage – just for a look. This is one of the most pleasurable experiences of keeping birds. There is never a "right time" to do this but I always describe spending loads of time with the birds in the breeding room and then giving far less time to the babies until they are in the flights. At this point I think it can be sometimes depressing to look seriously at the babies. They all too frequently disappoint. I watch them to see they are fit and well but I am too busy to study them.

Once babies seem to get to the stage when they put down the odd spot, the birds start to look like proper budgerigars. At this point in time I love to run them through the hands, take a careful look and may be run them through that show cage. I usually take the record book with me or I take a pencil and record the numbers of the interesting or birds with potential and check them up when I return to the birdroom. It's a job never to rush – but to enjoy.

We all know that scaly-face is a mite that causes a crust to form around the face and legs. It is easy to treat but it's a problem that never seems to quite totally disappear from the birdroom. It's always worth catching birds regularly from time to time and if you are in any doubt about scaly-face being present – treat them. I brought a cock in from a friend a few years ago and I must have brought the problem in with him. I treat everything before I pair up but just occasionally, I spot a bird that I think might be starting up with the problem. It's one to keep on top of with regular vigilance. Handling budgerigars regularly and looking at them properly will keep the problem to an absolute minimum.

254	12-13251	Spangle Grey green	C	Treva Turner/Gazzard Fellows line not used	Brian Harms
255	BH-13-191	Lt Green	C	Gazzard Fellows Half brother, half sister mating august bred retained siblings	Brian Harms
256	SQ 6672 - 13	Cinnamon Opaline Violet	H	Watson on Dam's side. Handy hen.	Barry Mitchell
257	FBA 156 - 13	Opaline Grey	C	Spots, length and blow.	Barry Mitchell
258	FBA 005 - 14	Spangle Mauve	H	Dunk/Watson. Hatched 13/8/13 Classy solid hen. Lovely face.	Barry Mitchell
259	SQ 10G 210-13	Normal Violet	H	Lovely colour, head width, deep mask and large spots. Has injured wing & no longer can fly. Has just laid fertile eggs which have been fostered.	Henry George
260	SQ 10G 143-13	Recessive Pied Grey	C	Good length, width of head and large spots. Brother to 10G 146-13 & 10G 148-13.	Henry George
261	SQ 10G 368-13	Lutino	C	Good shoulder and head qualities.	Henry George
262	SQ 10G 031-13	Recessive Pied Dark Green	H	Good size, head width and markings for a hen.	Henry George
263	SQP7 015 2013	Opaline Cinnamon Grey Green	C	Father to above cock and brother to SQP7 017 2013	L & F Percy
264	SQP7 026 2014	Lacewing Yellow/ white	C	From a top family of Lacewings	L & F Percy
265	2013 GG 202	Greywing Grey Green	C	Sire GrGr Greywing 11DB4 054 Dave Broughton Vic Dam Gr Gr Normal / greywing 12 GG 156 Gazzard Bird hatched 1/12/13 should be black rung but was green rung – bought in Syndicate lot and not required	Ernie Wise NSW
266	2013 GG 122	Violet / Greywing	C	Sire Violet Opaline 12 PIL 227 Gazzard bloodline Dam Dilute Skyblue 11 AK 145 bred by Alan Kent hatched 15/9/13 Green rung but should have been black rung brother to 13GG118 Bought in Syndicate lot, not required	Ernie Wise NSW
267	6S 100 2012	Blackeyed Yellow	C	Sire 6S.006.09 Blackeyed Yellow Dam 6S.147.10 Cinn Dk Green/Blackeye	Peter Schellbach
268	6S 024.2014	Clearwing Green	H	Sire 6S.038.09 Clearwing Lt Green Dam LD1.031.12 Clearwing Dk Green/blue	Peter Schellbach
269	SQ 2013 4256	Cinnamon Grey Green	H	Father 7 th Nationals – Bob Smith / George / Stephan bloodlines	Wayne Stephan
270	SQ 2012 2972	Opaline Dominant Pied Violet	H	George / Stephan bloodlines . Good mother	Wayne Stephan
271	2013 134	Goldenface Dominant Pied Grey	C	DOB 22/7/13 M Capasso ACT x Borg & Skivington VIC - unused	Bill Kirstenfeldt

Some birds hate being held and will sometimes go into a fit. It's quite upsetting the first time it happens. I usually release the bird quickly to the bottom of the flight or the cage. Just occasionally the bird will not recover but nearly every time the bird will look a bit dazed and move on as if nothing has happened. I watched a very experienced fancier handle a bird and it went into a fit. He placed the bird on the flat of his hand, on its back and pulled the legs towards the tail. Very quickly the bird came straight out of the fit and returned to normal. It was amazing and I have tried it several times since I saw this done. It's worth trying!

All budgerigars love to be sprayed and it's not always a good idea to spray them in wooden cages. I use an all-wire cage and return the birds to the stock cages or the flight later. It's a way of steadying the birds, improving their feather condition and it cleans the feathers. Its time consuming but its appreciated by the birds. Catching the birds for this purpose is another chance to run them through the hands and check all is well. I am fortunate that my flights contain no timbers and all I need to take care of is that none of the food gets wet, so I tend to spray the birds in the flights several times a week but I regularly catch the birds and spray the thoroughly.

Another stage of the year for catching birds is when the time comes to sort them for selling – or keeping. My method is to be constantly sorting birds and placing the “for sale” birds in sales cages or flights. I always sort on a basis of “I do not need this one” Birds that fall into this category are birds with any faults, lack size or probably more importantly, I have younger birds to replace them. I always sort from the bottom and work my way up to the better quality birds.

Probably the last stage of catching birds before a breeding season is when the birds are caught and placed in stock cages ready for breeding. At this time, I cut the feathers around the vent to increase fertility and I always check the length of the claws. I always feel that hens especially, with long claws are likely to damage eggs while they are incubating. It is at this stage that I usually wipe a spot of Ivomectin under the feathers on the back of the neck to be sure the bird is free of scalyface and any mites. It just makes sure all is well with the birds before they are introduced to their mates - before a breeding season.

Sydney Annual Lawn Show

St Ives Showground , Mona Vale Road, ST IVES, Sydney

November 30th 2014 - for Schedules and details contact

warren@brasea.com

272	2013 084	Goldenface Opaline Grey	H	DOB 3/3/13 Borg & Skivington Vic x Kirstenfeldt unused	Bill Kirstenfeldt
273	DGH150-2013	Normal Green	C	Jim L'Estrange-Henry George Ken Seagrott Bloodlines	HARRO (ACT)
274	DGH010-2013	Opaline Cinnamon Grey Green	H	Excellant stock bird with good shoulders from my Garry Watson line	HARRO (ACT)
275	DGH017-2014	Lacewing Yellow	H	Sister to DGH004-2014 in Auction Hanington Chandler bloodlines	HARRO (ACT)
276	EUG 184 2013	Grey	H	Sire Grey Spangle Dam Grey Opaline Line Bred from a lovely hen with nice spots. Maiden hen who has good breeding both sides	Andrew McFarland NSW
277	EUG 212 2013	Grey Cinnamon	H	Sire Mauve Cinnamon Dam Grey Opaline Looks like she is carrying a violet factor from Father. Maiden hen from my main line	Andrew McFarland NSW
278	EUG 358 2013	Green Opaline Spangle	C	Sire 1W 125 -12 Green Opaline/ Cinnamon Dam 1W202-12 DF Spangle Yellow. Maiden cock out of a very fertile pair of Garry Watson birds. Nice backline. Will use his siblings for correcting faults – Garry's birds are always well put together	Andrew McFarland NSW
279	LJR006-13	Opaline Lt/Green	C	Sire Ljr072-11 Spangle Opaline Sky, Dam Ljr042-11 Opaline Grey/Green	Lyle Reibelt
280	LJR017-13	Opaline Grey	C	Sirecb175-10 Normal Grey, Dam Ljr006-12 Opaline Grey	Lyle Reibelt
281	LJR005-14	Y/Face Normal Grey	C	Sire Lj015-13 Y/Face Normal Sky, Dam Ljr009-13 D/Pied Cinnamon Grey/Green	Lyle Reibelt
282	AH013/14	Pied violet	C	Length, mask, blow hatched 12/11/13, not used	Abi Haider
283	AH054/14	Yellow face Grey	C	Young bird, good size, hatched 18/11/13, not used	Abi Haider
284	13 WRB AK-182	Dilute Grey White	H	Super face with depth of mask, one of the best for this variety	Alan Kent
285	PBS PA 055 2013	Spangle D.F. yellow	H	Sire brother to JC's National Rep - hen Gazzard PA 134, PA054 and PA055 are all full sisters	Paul Anderson
286	26H 043-14	Recessive Pied Sky Blue	H	Don Harper/Henry George bloodline. Daughter of Best Young Recessive at NBBA Show Wauchope 2014.	Don Harper
287	26H 020-14	Recessive Pied Sky Violet	H	Good Mask. Trevor Drew/Don Harper bloodline	Don Harper
288	26H 086-12	Recessive Pied Violet	C	18th in NSW State Team Challenge 2013. Trevor Drew/Don Harper bloodline	Don Harper

289	11 GKP 067	Grey Norm/cin/op	C	Donated by Greg and Kylie Parker to Northern NSW Budgerigar Club. 75% Welshman 25% Gazzard Bloodlines. Sire Bred by the Welshman Family. Best Young Bird at 2009 BSNSW Annual Show. Sire purchased at Hills Auction for \$2200. Vendor	Northern NSW Budgerigar Club
290	12 NSW 12125	Grey Green Opaline	C	Donated by David Christie to Northern NSW Budgerigar club. John Scoble/Christie Bloodlines...Good sized spots.	Northern NSW Budgerigar Club
291	QNC 13 SAE 660	Fallow Skyblue	C	-	Scott Eriksen
292	CBS 11 SE 424	Opaline Skyblue	H	Tonkin x Kakoschke line, full sister to CBS 11 SE 409	Scott Eriksen
293	12 TT 185	Opaline Cinnamon Grey Green	H	Daughter Of My Cinn Cock That Represented SQ	Treva Turner
294	13 TT 033	White Lacewing	C	Horribin/ Ocallaghan	Treva Turner
295	KS13/231	Grey Green	H	Mannes Blodlines	Ken Seagrott
296	KS13/874	Grey Green	H	Late rung 12/89/13 Mannes Bloodlines	Ken Seagrott
297	SQ 12 13286	Cinnamon Blue Spangle	H	Retained all other nest mates Donated by Barry Prange	Fraser Coast Budgerigar Society
298	SQ 13 010	Grey Green	C	Won Champion YB at Fraser Coast Show 2014 Donated by Stephen Ribchester	Fraser Coast Budgerigar Society
299	FBA 255 - 14	Spangle Grey Green	C	Hatched 10/9/13.Swank and good feather.	Sunshine Coast Budgerigar Club
300	FBA 160 - 13	Spangle Grey	C	Big bird. Nice blow.	Sunshine Coast Budgerigar Club
301	SQ 10G 388-13	Lacewing Yellow	C	Directional feather, good markings & spots. Brother to 10G 382-13.	Henry George
302	SQ 10G 487-10	Cinnamon Grey	H	Good size, deportment, head, mask & spots. Bred last in late 2013.	Henry George
303	13 26H 011	Laurel Recessive Pied	H	Donated by Don Harper to Northern NSW Budgerigar Club. Sire Opaline Sky Violet/Recessive Pied.. Dam.. Laurel Recessive Pied..Henry George bloodlines.	Northern NSW Budgerigar Club
304	13-1837	Lacewing White	C	A nice young cock just 12 months old. Not used.	O'Callaghan Family
305	13-1845	Greywing Grey Green	H	Nice depth of grey in wings and markings. Good variety. Maiden hen just 12 months old	O'Callaghan Family
306	CBS 11 SE 409	Opaline Cobalt	H	Tonkin x Kakoschke line, full sister to CBS 11 SE 424	Scott Eriksen

307	NBA 3R 13 052	Normal Greygreen	C	-	Scott Eriksen
308	14 TT 032	Cobalt	H	Only Young	Treva Turner
309	12 J&S 260	Cinn Sky	C	Purchased Bird Very Fertile And Breeds Great Young Good Feeder Sibbling TT 052	Treva Turner
310	14 TT 035	Spangle Cobalt	C	Very Young	Treva Turner
311	13 MC1 009	Cinnamon Sky	H	Father was Jim LeStrange Multi Grand Champ winner and second and ANBC. Half sister to cinnamon cock 13 MC1 101	Mario Capasso
312	11 MC1 142	Normal Grey	C	Off a super Henry Goerge yellow face violet to my top grey hen which was sold here a couple of years ago. An excellent stud bird who has bred very strong youngsters, most are retained. One is unbeaten in NSW this year.	Mario Capasso
313	13 MC1 199	Opaline Grey Green	H	Off my Capper / Gazzard line	Mario Capasso
314	KV-147-12	Pied Greygreen	H	Good type	K & V O'Reilly
315	KV-137-13	Cinnamon Greygreen	C	Brother to KV-113-13	K&V O'Reilly
316	2014 1G 008	Cinnamon Grey Dominant Pied	H	Hatched 23/09/2013 Sire: 2011 Sq 9081 Greygreen George/Tuthill Dam: 2010 Sq 6856 Opal Dom Pied Grey Winch Line	K & C Gough BNSBS Inc
317	2014 1G 001	Blue Clearwing	C	Hatched 14/11/2013 Sire: 2011 Pb1 106 Blue Clearwing P Brown Dam: 12 1g 029 Blue Clearwing Gough Line	K & C Gough BNSBS Inc
318	2014 SQ 1G 028	Grey	H	Hatched 05/10/2013 Sire: 11 Sq 9048 Yellowface Grey Winch Line Dam: 12 Sq 1g 025 Grey Hen George/Gough Lines	K & C Gough BNSBS Inc
319	DP 30/13	Green Light Green	H	Croft Background	D&V Punton
320	DP 336/13	Yellow Df	H	Good Family	D&V Punton
321	26H 160-12	Recessive Pied Dark Green	C	SIRE: Normal Sky Violet/Recessive Pied No NSW 13254-10. DAM: Recessive Pied Light Green No 26H 149-08. <u>Donated By Don Harper "Thank You"</u>	BRASEA
322 (PAIR)	KS12/1022 KS13/303	Grey Spangle Green Spangle	C H	Lovely Clean bird late rung Related to and will pair well with the cock <u>Donated By Ken Seagrott "Thank You"</u>	BRASEA

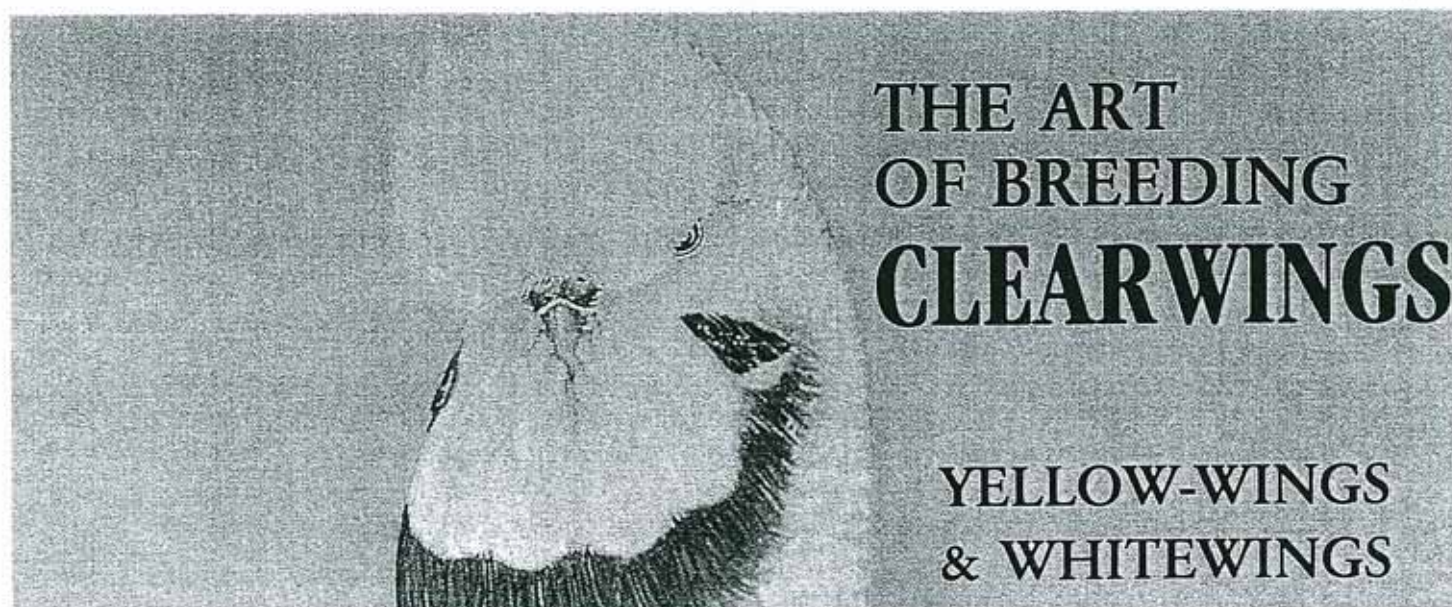
323	SQ 8932 / 12	Light Green Normal	C	Long bird. Spots and mask.	Brian Hollingsworth
324	SQ 9348 / 14	Cinnamon Grey Green	C	Well bred with plenty of growth to come.	Brian Hollingsworth
325	SQ 9334 / 14	Normal Light Green	C	Nice young cock bird.	Brian Hollingsworth
326	SQ MHG 13 015	Grey Green Normal	C	Sire Bs2 10 057 Lt Gr Op Dam Mhg 12 005 G G Cin	Mick Greber
327	SQ MHG 13 042	Sky Normal	H	Sire A1 12 062 G G Spangle Dam Mhg 12 008 Lt Gr Nor	Mick Greber
328	KS13/617	Green Normal	H	Big Hen unnused	Ken Seagrott
329	KS12/314	Green Spangle Crest	H	Full circle – has bred well	Ken Seagrott
330	KS12/323	Lutino	H	Good colour & size	Ken Seagrott
331	SQ 14571 - 2012	Normal Grey	C	Good size & spot. Have retained bigger siblings but this bird is still very good quality.	Jamie Wright
332	No ring – cut off But was SQ 9570 - 2014	Opaline Light Green	H	Good depth of mask on this hen and all her siblings. Nice style. Will develop more.	Jamie Wright
333	1JJ-104-13	Double Factor Spangle Yellow	H	Sire.1JJ-163-11 D/F/S Yellow Dam.1JJ-028-12 D/F/S Yellow	J&J McAllister
334	1JJ-013-13	Albino	C	-	J&J McAllister
335	AAA-041-2012	Lacewing Yellow	H	Large hen has it all, length, shoulder and head features. Reluctant to sell this one. Jamie Wright's National line.	A & A Francis
336	SQ-5399-2013	Lutino	H	Young hen with potential to further develop. Good colour and type for variety.	A & A Francis
337	VP-050-13	Normal Grey	C	Scoble	Shane Von Pein
338	VP-043-13	Normal Grey Green	H	Scoble / Smith	Shane Von Pein
339	SQR1014033	Cinnamon Lt Grn	C	S: Cin Grey SQR109065 D: Opal Cin Lt Grn SQR1010051 Good length, clean, nice spot. Gazzard/Tuthill bloodlines down from \$4000 Gazzard cock. Brother to lot #4	W & G Robinson
340	SQR1014002	Recessive Grey Grn	C	S: Rec Grey Grn SQ01219303 D: Lt Grn/Rec SQ0117182 Good length and blow. Perfect variety markings. Sister Champion N/F of show at Toowoomba Annual. Brother to best recessives breed in 2014. 50% VG O'Reilly bloodline.Very young. Brother to lot #5	W & G Robinson

341	13 SQ 9223	Cobalt Opaline Spangle	C	Grey Cock 11 G&J 102 White Df Spangle Hen 11 G&J 123	Greg Horrobin
342	13 SQ 9237	Cobalt Cin Opaline Spangle	H	Sky Spangle Cock 10 G&J 068 Grey Cin Opaline Hen 11 G&J 005	Greg Horrobin
343	KWC 017 – 2013	Normal Cinnamon Sky Blue	H	Sire: Norm Dk Green (Von Pein x Kent) Dam: Cinn Lt Green (Stan Ford) This hen unused.	Kev Campbell
344	KWC 029 – 2013	Normal Violet Sky	H	Sire: Norm Violet (Horrobin/Toombs) Dam: Norm Violet (K&V O'Reilly) This bird has not been used.	Kev Campbell
345	DKP - 105 / 2013	Light Green Opaline	C	Sire:- (Dk Green / Ino) 100% Kelwyn Kakoschke Dam:- (Lutino) This hen came 14th @ 2012 NSW State Selection Getting out of this variety Hatched:- 20/05/2013. Maiden Cock	Peters Family
346	DKP - 044 / 2013	Light Green Normal Spangle	H	Sire:- (Light Green Spangle) 100% Gary Watson Dam:- (Dark Green Normal) 100% Gary Watson Hatched:- 20/12/2012. Maiden Hen	Peters Family
347	BH-13-045	Cinnamon Opaline LT Green	H	Alan buetell/Scoble lines Father produces quality chicks	Brian Harms
348	BH-13-089	Dominent pied Grey green	C	Scoble/treva turner/ocallaghan nice bird not used	Brian Harms
349	BH-13-006	Cinnamon Grey	H	Gazzard/fellows/scoble very nice tidy hen	Brian Harms
350	FBA 008 - 13	Grey Normal	C	Big long bird. Directional feather and good blow.	Barry Mitchell
351	SQ 10G 325-13	Recessive Pied Dark Green	H	Good head qualities and size.	Henry George
352	SQ 10G 092-13	Dilute Spangle Grey Green	C	A quality dilute. Only in the auction because I have decided not to breed this variety.	Henry George
353	SQP7 021 2014	Lacewing Yellow	H	From a Jamie Wright outcross	L & F Percy
354	SQP7 017 2013	Opaline Cinnamon Light Green	H	Sister to SQP7 015 2013	L & F Percy
355	SQP7 006 2014	Spangle Grey Green	H	Good solid hen with nice even wing markings	L & F Percy
356	2013 GG 118	Opaline Violet / greywing	H	Sisiter to 13GG122 breeding as above hatched 30/8/13 should be black rung but is green rung Bought in Syndicate lot, not required	Ernie Wise NSW
357	2013 20W 073	Cinnamon Grey Green	H	Sire Dark Green 12 GD067 Guy Dening line Dam Lutino 13 20W067 hatched 27/12/13 sister to 14 20W040	Ernie Wise NSW

358	2014 20W 040	Opaline Cinnamon Grey Green	H	Sister to 13 20W073 hatched 4/11/13 Breeding as above lot	Ernie Wise NSW
359	SQ 2013 4333	Skyblue	C	Grandfather 7 th Nationals George / Stephan bloodlines	Wayne Stephan
360	SQ 2012 3725	Opaline Cinnamon Dominant Pied Skyblue	H	George / Stephan bloodlines	Wayne Stephan
361	SQ 2013 4278	Yellowface Cinnamon Violet	H	George / Stephan Bloodlines. Mother won opposite sex Ipswich Show	Wayne Stephan
362	2012 083	Clearwing Dark Green	H	Sire 10-GB7477SA Dam 09- GB7377 SA Good mother DOB 1/2/12	Bill Kirstenfeldt
363	2013 109	Yellowface Blue Recessive Pied	H	DOB 9/4/13 B Hollingsworth x K Seagrott - not used	Bill Kirstenfeldt
364	2013 083	Clearwing Sky or Dilute	C	DOB 28/2/13 Sire 10GB7-477 SA bird Dam 12/077 Kirstenfeldt not used	Bill Kirstenfeldt
365	13 / 092 BMW	Spangle Cinnamon Light Green	H	-	Brian Walters NSW
366	12 /138 BMW	Opaline Cinnamonb Light Green	H	-	Brian Walters NSW
367	14 / 042 BMW	Cinnamon Grey	H	Dob 15/12/13 From A Danny Card	Brian Walters NSW
368	DGH028-2013	Normal Grey Green	C	Henry George Gary Watson bloodlines	HARRO (ACT)
369	DGH022-2013	Normal Grey Green	C	Father was strong Henry George Normal Green cock 10G 093-2009	HARRO (ACT)
370	EUG 076 2013	Grey	C	Sire Grey Green Dam Grey Spangle Brother to EUG 083 and EUG 044 2013 in this Auction. Maiden cock. Long bird closely line bred from my main and only line of birds	Andrew McFarland NSW
371	EUG 039 2013	Grey Dilute	H	Sire Grey Green / Opaline Dam Grey Pied Parents proved to be split dilute These birds pop out of my main line from time to time. Stems back to the Mannes imports and occasionally dilutes and Greywings appear with line breeding	Andrew McFarland NSW
372	EUG 083 2013	Grey Green Spangle	C	Sire Grey Green Dam Grey Spangle maiden cock brother to EUG 076 & EUG 044 2013 in this Auction. Long bird with nice spangle matrkings and a long mask	Andrew McFarland NSW
373	AH086/13	Pied Blue	H	Young hen not used, DOB 23/4/13	Abi Haider
374	AH085/14	Clearbody Green	C	His father came 5 th at Selection of NSW TEAM DOB19/2/14	Abi Haider
375	PBS PA054 2013	Spangle D.F. yellow	H	Sire brother to JC's National Rep - hen Gazzard. PA 134, PA054 and PA055 are all full sisters	Paul Anderson

376	PBS PA 134 2012	Opaline Grey Green	H	Sire brother to JC's National Rep - hen Gazzard. PA 134, PA054 and PA055 are all full sisters	Paul Anderson
377	26H 052-12	Recessive Pied Dark Green	C	15th in NSW State Team Challenge 2013. Good mask, bred from big classy mother. 100% Don Harper bloodline	Don Harper
378	26H 002-12	Recessive Pied Greygreen	H	This hen's father, Recessive No NSW 13258-10 & grandfather Recessive No 26H 007-08, both came 1st in NSW State Team Challenges 2009 & 2011	Don Harper
379	12 NSW 12135	Yellow Faced Grey Cinnamon	H	Donated by David Christie to Northern NSW Budgerigar Club. John Scoble/Christie Bloodlines...Good depth of mask.	Northern NSW Budgerigar Club

WE HAVE STOCKS OF
MALCOLM FREEMANTLE'S



THE ART OF BREEDING CLEARWINGS

YELLOW-WINGS
& WHITEWINGS

Available to CBSA Members at \$25 Aust including postage & a little bit for the CBSA

PLUS we have in stock copies of Ken Gray's book

"RAINBOW BUDGERIGARS"

Which has sections on Yellowface & Goldenface varieties in Clearwings

Dark & Violet Factors

Opaline Mutation in Clearwings

Clearwing Mutations

Combining the Mutations

PLUS

some great colour photos of Clearwings, Single Factor Goldenface, Yellowface, Double Factor Goldenface, Rainbows, Opaline Clearwings, Suffused

ONLY \$20 Aust. includes Post for CBSA Members

“BRASEA”

Budgerigar Rare And Specialist Exhibitors of Australasia

Incorporating The Australian Bush Budgerigar Organisation “ABBO”

PO BOX 141, CROYDON, NSW, 2132, Australia

web www.brasea.com email warren@brasea.com

Now you can join “BRASEA” as a member for \$25 or
email \$15 per year from July to June 30th
per member or partnership at the one address

Seniors & Students halve all Fees – Juniors FREE

NEW MEMBER / RE-NEWAL

Members are included on the mailing list for all correspondence and auction catalogues, invited to assist with all “BRASEA” functions in their area, asked to roll their sleeves up to work for “rare” budgerigar varieties and colours each year... in short, this is a working Organisation, all you need to do is give, give, give, your time and money and effort... *have no illusions ... you get nothing but the satisfaction of working for our budgerigar rares...*

I hereby apply for membership of “BRASEA” under the conditions listed above and agree to work for the benefit of the “Rare” Budgerigar varieties and colours, the Australian Bush Budgerigar Organisation and the World Friendly Budgerigar Family

Name(s).....

Mailing Address.....

.....Postcode..... Country.....

Telephone (.....).....Mobile

Email

***Direct Bank Deposit Commonwealth Bank BSB 062-217 Account 1039 6061 email details**

I/We enclose \$ **25.00**...for our membership fee to the next June 30th (*cross out one*)

I/We enclose \$ **15.00**...for our membership till June 30th and understand all Bulletins and correspondence **will only be emailed to me** ... *must have an email address for lower rate*

I/We would also like to donate (optional) \$ towards the “BRASEA” programme.

Part year - Sept to June \$20/\$10, Dec to June \$15/\$7.50, Mar to June \$10/ \$5

Seniors & Students only pay half rates – Juniors FREE

.....SignSign

***All Members incl Juniors** (new and renewals) go into the draw for one of our large beautiful paintings, drawn approx December 15th – every time a **Member introduces a new Member** the original Member goes into a draw twice, for special prizes – **help promote “BRASEA”**

OVERSEAS MEMBERS PLEASE PAY IN AUSTRALIAN DOLLARS

“BRASEA”

Budgerigar Rare & Specialist Exhibitors of Australasia REPRESENTATIVES & CONTACTS

Central Office Sydney, New South Wales Australia + 61 2 9747 6642
PO Box 141 CROYDON NSW, 2132

Email: warren@budgerigarrare.com warren@brasea.com 0418 9166 85

Junior President Sophie Hollingsworth paul_jody@optusnet.com.au

Scott Eriksen	Central & North Queensland	07 4928 4661
	Email: Scott.A.Eriksen@National.com.au	
David Cook	South Queensland	07 3277 8986
Jamie Wright	Sth Q'land jwright@jwfs.net.au	07 3355 6223
Harry Eady	Victoria	03 9401 6818
Eva De Rango	Victoria evad4@bigpond.net.au	03 9816 3560
Alistair Home	Tasmania	03 6231 0032
	Email: jennyhome@bigpond.com.au	
Wayne Weidenhofer	South Australia	08 8552 4283
	Email: wayneweedo@tpg.com.au	
Rob Hugo	Western Australia	08 9377 2420
	Email: unique1@bigpond.com.au	
Geoff & Ann Hand	Northern Territory	0487 801217
	Email: amhand@westnet.com.au	
Ghalib Al-Nasser	UK incl Ireland phone/fax	+ 44 1787 282332
	Email: al-nasser@cb64u.co.uk	
Gerd Bleicher	Germany/Europe	+ 49 30 404 42 51
	Email: gerd.bleicher@dsu-ev.de	
Dave Ingoe	New Zealand - South Island	+ 64 6 868 1606
	Email: dingo@ewc.co.nz	
Dave Ingoe	New Zealand - North Island	+ 64 6 868 1606
	Email: dingo@ewc.co.nz	
Brian & Janette Purss	Norfolk Island - South Pacific	+ 6723 22850
	Email: purss@callam.nf	
Dewayne Weldon	United States USA	+1 936 422 9092
	Email: well-doneaviary@valornet.com	
Deon Davie	South Africa	+2711 7606095
	Email: deon@pnacentral.co.za	
Carl Slavin	Canada	+1 604 515 9495
	Email: zebraps@shaw.ca	
Naveed Ijaz	Pakistan	+ 92 321-4422502
	Email: naveed-birds@usa.net	
Jorge de Pina	Brazil Email: jorgedepina@ci.com.br	+0055 (21)2493-7096

Elenbee

BIRD SEEDS & SUPPLIES

MAIL ORDER
AVAILABLE

Mixes made to your formula

- All Golden Cob bird seed mixes
- Elenbee budgie, finch, canary, small parrot, peachface & Parrot mixes
- Fledgling mix budgie breakfast
- Egg & biscuit, tonic seed mixes, cuttlebone, panicum & French white millet sprays, shell grit

Medications, Vitamin & Mineral Supplements

- The "Bird Essentials" range of products
- Elenbee Murphy's Minerals
- F10sc range
- Vetafarm & Rob Marshall products
- Paswell & Inca products

Cages & Accessories

- Show cages, nest boxes, flight cages & breeding cages
- Seed & water hoppers, show cage drinkers
- Candling torches

Large range of other accessories and medications

Vermin Control

- For rats, mice, cockroaches, flies, moths etc.

Clothing

- T-shirts, fleecy jackets, denim shirts, caps, quilts etc.
- Embroidered club logo's etc...

Trade Tables

- We operate trade tables at a number of branch BSNSW Meetings, shows and events, "BRASEA" events (except Jun Function).

Enquiries for trade table presentations and club orders welcome.

Elenbee

BIRD SUPPLIES

Contact: Barry or Terese Ryan

Ph/Fax: (02) 9624 5129

Factory: 13/38 Powers Rd, Seven Hills, NSW, 2147

Open: Tues - Fri 9am-5pm, Sat 9am-1pm

Closed Sun & Mon

www.elenbeebirdsupplies.com.au



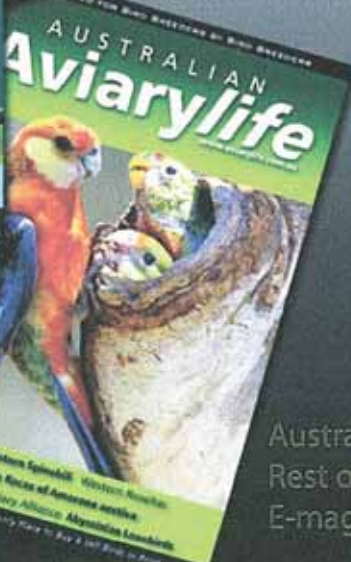
Henry receiving his Award from the Governor of Queensland
Ms. Penelope Wensley AC



**Henry George
AOM**

Congratulations
Henry we are so
proud of your
achievements in
the Budgerigar
Fancy as well as
your Industry
activities – we
now have
yourself and John
Mulley SA to
carry us forward
– I wonder if
there are others
we do not know
about – please
let us know

AUSTRALIAN **Aviarylife**



On Sale Now at Your Newsagents or
by Subscription
On line: <http://www.aviarylife.com.au/subscribe-online.html>

Post: PO Box 414
Stanhope Gardens, NSW, 2768

6 Issues Available in Print or
Delivered Digitally to Your
In-box as a Secured PDF File

Australia \$65.00 Inc GST
Rest of World \$95.00 Airmail
E-magazine \$45.00

email: simon@aviarylife.com.au
website: <http://www.aviarylife.com.au>
facebook: www.facebook.com/aviarylife
phone: Simon 0429 008 850



Budgerigar Photos Courtesy Robert Menwell & Daniel Lotoff